

Why to choose Perkins Generator & Diesel Generator Services of Cox Power Max?



CONTACT US

ADDRESS

Bab-e-Arif Apartment,
Shop no.A-59, North Karachi.

WEBSITE

www.coxpowermax.com

EMAIL

ajaz.ahmed@coxpowermax.com

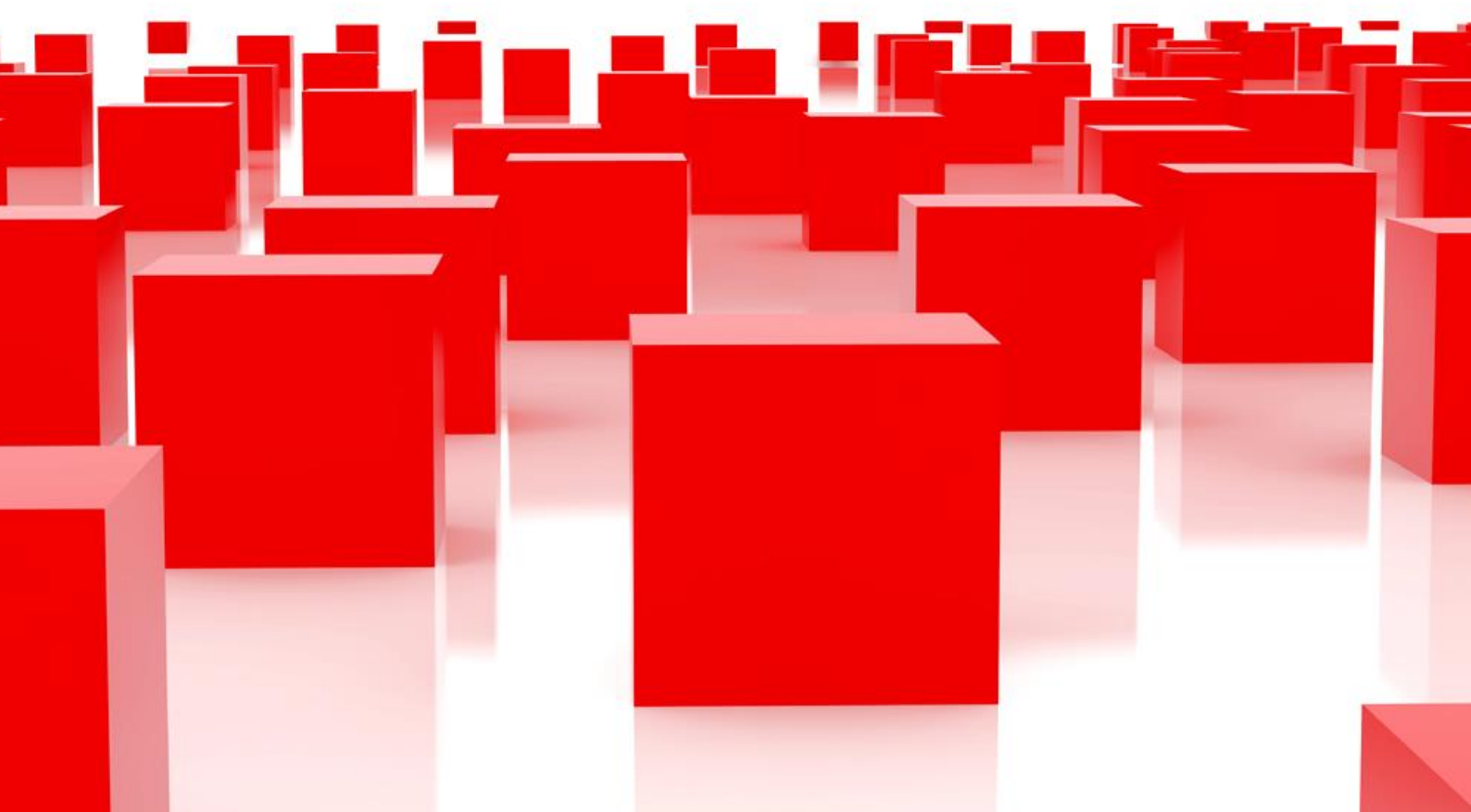
CONTACT #

03212010005

Generators have become a necessity in cities such as Karachi, Lahore, and Islamabad. Cox Power Max acts as a distributor for Perkins Generator in Pakistan. We provide our end consumers with diesel power generators and various other types of home generators. One can buy and get on rent generators from Cox Power Max Company at an affordable rate. Each category of generators, such as diesel generators and gas generators are available for users ranging from 10KVA to 2500KVA.

Perkins Engines Company is an internationally renowned brand for manufacturing and supplying high-quality diesel engines. Cox Power Max helps elevate the status of this company by providing the local residents of Pakistan with their high-quality generators. They are focused on improving the quality of supplied material and dedicate their company to providing innovative engineering skills to end consumers at the best rates. Cox Power Max provides their clients with many incentives in order to evoke the need to buy generators from them. Be it any category of generators, ranging from diesel generators to gas generators to various kinds of home generators, Cox Power Max supplies it all. Their main aim is to witness further enhanced quality in the application of latest technology. They aim to supply innovative products which are reliable and flexible for the end consumer.

Each year, Cox Power Max strives to become better than it was previously. Innovation in the field of diesel engines is a constant object. The need and desire to keep aligned with the changing world of modern technology is essential for us in order to succeed in this business area. Cox Power Max is doing fairly well for an emerging power engineering company. With satisfied customers all over **Pakistan**, particularly in cities such as Karachi, Lahore, and Islamabad, we have positioned their brand in a manner which indicates affordability and convenience.





Contents

i) ABOUT

- COMPANY
- CONTACT US

ii) PRODUCTS

- GENERATORS
 - ◆ Diesel generator
 - ◆ Steam generator
- ENGINES
 - ◆ Diesel engine
 - ◆ Gasoline engine
- USED EQUIPMENT
 - ◆ Boilers
 - ◆ Generators
 - ◆ Steam turbines
 - ◆ Electric motor
- BOILERS
 - ◆ Steam boiler
- RENTAL
 - ◆ Generators
 - ◆ Power system
- POWER SYSTEM

iii) OUR PROUD CLIENTS

iv) SERVICES

ABOUT US

COMPANY:

Introduction to **Cox Power max**

Company

Cox Power Max Company was established in 1993 with the sole aim to make international quality generators and other backup energy sources available in **Pakistan's** major cities such as **Karachi, Lahore and Islamabad**, at an affordable rate. The core business objective, however, is the sale of premium quality **electricity generators**. We strive to improve each year by constantly coping up with the advents in the latest technological advancements. The engineering systems are up to the mark and provide the customers with high quality of products including many after sales services such as installation and guide to operating the product etc. Other than providing the Pakistani market with advanced backup sources, **Cox Power Max** has been involved in research and development sector with the help of their well-equipped laboratory. This helps in elevating the level of customer satisfaction in the whole experience

What do we offer to our customers?

Cox Power Max Company deals with all kinds of generator sales varying from **power generators** to **diesel generators** to various **home generators**.

Customer First:

The level of customer care provided at our company is the best in the whole of **Pakistan**. We strive to achieve optimum level of customer satisfaction from each aspect of service provided, be it sales, support, and customer care or even after sales. We, at **Cox Power Max** believe that it is the customer who makes or breaks a company; hence we value each of our customers a lot.

Having distribution centers in all of **Pakistan's** biggest cities, i.e. **Karachi, Lahore, Islamabad**, we provide the customers with the highest quality of **Perkins generator** there is. Perkins Engines Company is an internationally renowned company, well-known for manufacturing quality diesel engines.

Nature of Business:

Providing our clients with a variety of services under one roof gives us a huge advantage over other local competitors. We provide sales, support, installation and commissioning services all in one go. These add to the list of competencies available to the end consumers.

Reliability:

Being a reliable source for the products and services being provided is of extreme importance. Be sure to expect the highest quality products at **Cox Power Max Company**. We ensure you get nothing but the best of us.

Innovative:

Power backup solution is an aspect which innovates on an hourly basis. We make sure that our customers get the best and up to date products.

Efficiency:

Cost efficiency is of extreme vitality. Catering to the Pakistani market we need to keep the cost efficiency fact in the fore front of our mind before incurring any add-on prices



PRODUCTS

GENERATORS

DIESEL GENERATORS 10KVA TO 2500KVA

STEAM GENERATORS

DIESEL GENERATOR (2500kVA Perkins Diesel Generator Set)



Product Name: 2500kVA Perkins Diesel Generator Set (10kVA-2500kVA)

Model No.: PM-X2500

Minimum Order: 1

Product Abstract:

2500kVA Perkins Diesel Generator Set: Prime Power 1800kW/2250kVA;

Standby Power 2000kW/2500kVA;

Engine model: 4016-61TRG3A; Fuel cons.100 % (L/H): 440; Cyl.

Arrangement: 16V; Intake type:

Turbocharged; Type of governor:

Electronic governor; Frequency:

50Hz/60Hz; Rated speed:

1500/1800rpm; Phase/Wires: 3 phase 4 wires; Displacement (L): 61.1;

Dimension (mm): 6000x2800x3500;

Weight (kg): 15000; Alternator:

Stamford, Marathon, Leroy Somer,

Faraday, Engga; Automatic controller:

Deep Sea and Hassan.

DIESEL GENERATORS 10KVA TO 2500KVA

2420kVA Perkins Diesel Generator Set (10kVA-2500kVA)



Product Name: 2420kVA Perkins Diesel Generator Set (10kVA-2500kVA)
Model No.: PM-X2420
Minimum Order: 1

Product Abstract:

2420kVA Perkins Diesel Generator Set:
Prime Power 1760kW/2200kVA;
Standby Power 1936kW/2420kVA;
Engine model: 4016-61TRG3A; Fuel cons.100 % (L/H): 440; Cyl.
Arrangement: 16V; Intake type: Turbocharged; Type of governor: Electronic governor; Frequency: 50Hz/60Hz; Rated speed: 1500/1800rpm; Phase/Wires: 3 phase 4 wires; Displacement (L): 61.1; Dimension (mm): 6000x2800x3500; Weight (kg): 15000; Alternator: Stamford, Leroy Somer.



DIESEL GENERATORS 10KVA TO 2500KVA

2200kVA Perkins Diesel Generator Set(10kVA-2500kVA)



Product Name: 2200kVA Perkins Diesel Generator Set(10kVA-2500kVA)
Model No.: PM-X2200
Minimum Order: 1

Product Abstract:

2200kVA Perkins Diesel Generator Set:
Prime Power 1600kW/2000kVA;
Standby Power 1760kW/2200kVA;
Engine model: 4016TAG2A; Fuel
cons.100%(L/H): 392 ; Cyl.
arrangement: 16V; Intake type:
Turbocharged; Type of governor:
Electronic governor; Frequency:
50Hz/60Hz; Rated speed:
1500/1800rpm; Phase/Wires: 3 phase 4
wires; Displacement(L): 61.1 ;
Dimension(mm): 5800x2800x3500;
Weight(kg): 13500; Alternator:
Stamford, Marathon, Leroy Somer



DIESEL GENERATORS 10KVA TO 2500KVA

2063kVA Perkins Diesel Generator Set(10kVA-2500kVA)



Product Name: 2063kVA Perkins Diesel Generator Set(10kVA-2500kVA)

Model No.: PM-X2063

Minimum Order: 1

Product Abstract:

2063kVA Perkins Diesel Generator Set:

Prime Power 1500kW/1875kVA;

Standby Power 1650kW/2063kVA;

Engine model: 4016TAG1A; Fuel cons.100%(L/H): 367 ; Cyl.

arrangement: 16V; Intake type:

Turbocharged; Type of governor:

Electronic governor; Frequency:

50Hz/60Hz; Rated speed:

1500/1800rpm; Phase/Wires: 3 phase 4 wires; Displacement(L): 61.1 ;

Dimension(mm): 5800x2800x3500;

Weight(kg): 13500; Alternator:

Stamford, Marathon, Leroy Some



DIESEL GENERATORS 10KVA TO 2500KVA

1925kVA Perkins Diesel Generator Set(10kVA-2500kVA)



Product Name: 1925kVA Perkins Diesel Generator Set(10kVA-2500kVA)

Model No.: PM-X1925

Minimum Order: 1

Product Abstract:

1925kVA Perkins Diesel Generator Set:

Prime Power 1400kW/1750kVA;

Standby Power 1540kW/1925kVA;

Engine model: 4016TAG; Fuel

cons.100%(L/H): 338 ; Cyl.

arrangement: 16V; Intake type:

Turbocharged; Type of governor:

Electronic governor; Frequency:

50Hz/60Hz; Rated speed:

1500/1800rpm; Phase/Wires: 3 phase 4 wires; Displacement(L): 61.1 ;

Dimension(mm): 5800x2800x3500;

Weight(kg): 13000; Alternator:

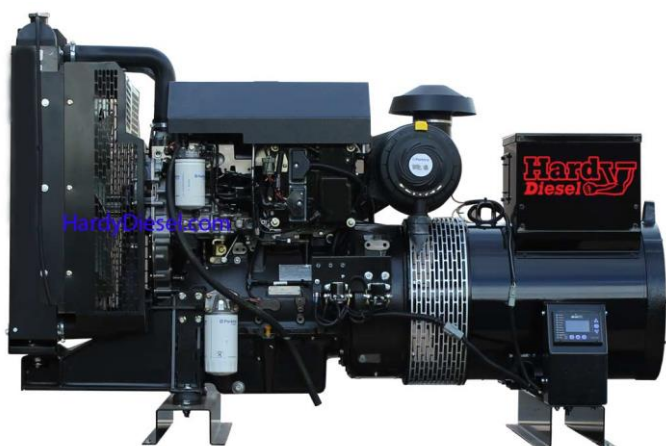
Stamford, Marathon, Leroy Somer



Perkins

DIESEL GENERATORS 10KVA TO 2500KVA

1815kVA Perkins Diesel Generator Set(10kVA-2500kVA)



Product Name: 1815kVA Perkins Diesel Generator Set(10kVA-2500kVA)

Model No.: PM-X1815

Minimum Order: 1

Product Abstract:

1815kVA Perkins Diesel Generator Set:

Prime Power 1320kW/1650kVA;

Standby Power 1452kW/1815kVA;

Engine model: 4012-46TAG3A; Fuel cons.100%(L/H): 329 ; Cyl.

arrangement: 12V; Intake type:

Turbocharged; Type of governor:

Electronic governor; Frequency:

50Hz/60Hz; Rated speed:

1500/1800rpm; Phase/Wires: 3 phase 4 wires; Displacement(L): 45.8 ;

Dimension(mm): 5100x2200x2800;

Weight(kg): 10200; Alternator:

Stamford, Marathon, Leroy Somer



DIESEL GENERATORS 10KVA TO 2500KVA

1650kVA Perkins Diesel Generator Set(10kVA-2500kVA)



Product Name: 1650kVA Perkins Diesel Generator Set(10kVA-2500kVA)

Model No.: PM-X1650

Minimum Order: 1

Product Abstract:

1650kVA Perkins Diesel Generator Set:

Prime Power 1200kW/1500kVA;

Standby Power 1320kW/1650kVA;

Engine model: 4012-46TAG2A; Fuel cons.100%(L/H): 292 ; Cyl.

arrangement: 12V; Intake type:

Turbocharged; Type of governor:

Electronic governor; Frequency:

50Hz/60Hz; Rated speed:

1500/1800rpm; Phase/Wires: 3 phase 4 wires; Displacement(L): 45.8 ;

Dimension(mm): 5100x2200x2800;

Weight(kg): 10200; Alternator:

Stamford, Marathon, Leroy SomeR



DIESEL GENERATORS 10KVA TO 2500KVA

1513kVA Perkins Diesel Generator Set(10kVA-2500kVA)



Product Name: 1513kVA Perkins Diesel Generator Set(10kVA-2500kVA)
Model No.: PM-X1513
Minimum Order: 1

Product Abstract:
1513kVA Perkins Diesel Generator Set:
Prime Power 1100kW/1375kVA;
Standby Power 1210kW/1513kVA;
Engine model: 4012-46TWG3A; Fuel
cons.100%(L/H): 270 ; Cyl.
arrangement: 12V; Intake type:
Turbocharged; Type of governor:
Electronic governor; Frequency:
50Hz/60Hz; Rated speed:
1500/1800rpm; Phase/Wires: 3 phase 4
wires; Displacement(L): 45.8 ;
Dimension(mm): 4800x21000x2500;
Weight(kg): 10100; Alternator:
Stamford, Marathon, Leroy Somer



DIESEL GENERATORS 10KVA TO 2500KVA

1375kVA Perkins Diesel Generator Set(10kVA-2500kVA)



Product Name: 1375kVA Perkins Diesel Generator Set(10kVA-2500kVA)

Model No.: PM-X1375

Minimum Order: 1

\

Product Abstract:

1375kVA Perkins Diesel Generator Set:

Prime Power 1000kW/1250kVA;

Standby Power 1100kW/1375kVA;

Engine model: 4012-46TWG2A; Fuel cons.100%(L/H): 249 ; Cyl.

arrangement: 12V; Intake type:

Turbocharged; Type of governor:

Electronic governor; Frequency:

50Hz/60Hz; Rated speed:

1500/1800rpm; Phase/Wires: 3 phase 4 wires; Displacement(L): 45.8 ;

Dimension(mm): 4800x2100x2500;

Weight(kg): 10000; Alternator:

Stamford, Marathon, Leroy Somer



DIESEL GENERATORS 10KVA TO 2500KVA

1100kVA Perkins Diesel Generator Set(10kVA-2500kVA)



Product Name: 1100kVA Perkins Diesel Generator Set(10kVA-2500kVA)
Model No.: PM-X1100
Minimum Order: 1

Product Abstract:

1100kVA Perkins Diesel Generator Set:
Prime Power 800kW/1000kVA; Standby Power 880kW/1100kVA; Engine model: 4008TAG2A; Fuel cons.100%(L/H): 194 ; Cyl. arrangement: 8L; Intake type: Turbocharged; Type of governor: Electronic governor; Frequency: 50Hz/60Hz; Rated speed: 1500/1800rpm; Phase/Wires: 3 phase 4 wires; Displacement(L): 30.8 ; Dimension(mm): 4700x2100x2350; Weight(kg): 7900; Alternator: Stamford, Marathon, Leroy Somer



DIESEL GENERATORS 10KVA TO 2500KVA

990kVA Perkins Diesel Generator Set(10kVA-2500kVA)



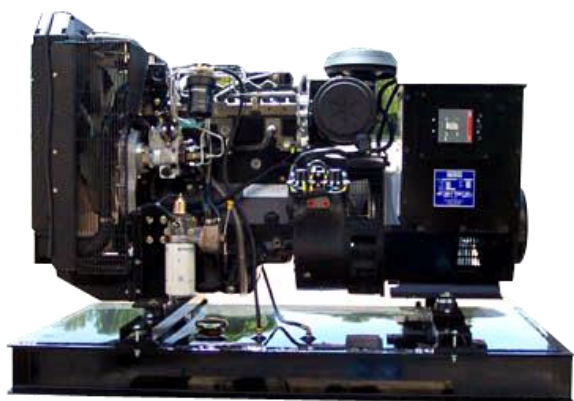
Product Name: 990kVA Perkins Diesel Generator Set(10kVA-2500kVA)

Model No.: PM-X990

Minimum Order: 1

Product Abstract:

990kVA Perkins Diesel Generator Set:
Prime Power 720kW/900kVA; Standby Power 792kW/990kVA; Engine model: 4008TAG1A; Fuel cons.100%(L/H): 174 ; Cyl. arrangement: 8L; Intake type: Turbocharged; Type of governor: Electronic governor; Frequency: 50Hz/60Hz; Rated speed: 1500/1800rpm; Phase/Wires: 3 phase 4 wires; Displacement(L): 30.8 ; Dimension(mm): 4700x2100x2350; Weight(kg): 7700; Alternator: Stamford, Marathon, Leroy SomeR



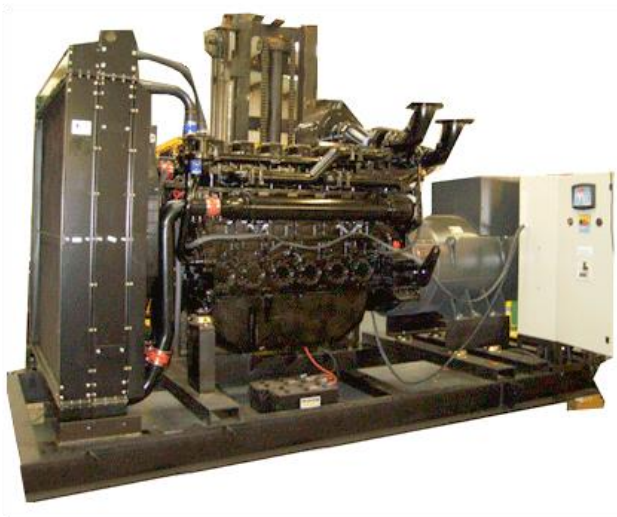
DIESEL GENERATORS 10KVA TO 2500KVA

880kVA Perkins Diesel Generator Set(10kVA-2500kVA)



Product Name: 880kVA Perkins Diesel Generator Set(10kVA-2500kVA)
Model No.: PM-X880
Minimum Order: 1

Product Abstract:
880kVA Perkins Diesel Generator Set:
Prime Power 640kW/800kVA; Standby Power 704kW/880kVA; Engine model: 4006-23TAG3A; Fuel cons.100%(L/H): 158 ; Cyl. arrangement: 6L; Intake type: Turbocharged; Type of governor: Electronic governor; Frequency: 50Hz/60Hz; Rated speed: 1500/1800rpm; Phase/Wires: 3 phase 4 wires; Displacement(L): 22.9 ; Dimension(mm): 4100x1750x2300; Weight(kg): 5500; Alternator: Stamford, Marathon, Leroy Somer



DIESEL GENERATORS 10KVA TO 2500KVA

789kVA Perkins Diesel Generator Set(10kVA-2500kVA)



Product Name: 789kVA Perkins Diesel Generator Set(10kVA-2500kVA)
Model No.: PM-X789
Minimum Order: 1

Product Abstract:

789kVA Perkins Diesel Generator Set:
Prime Power 580kW/725kVA; Standby Power 638kW/789kVA; Engine model: 4006-23TAG2A; Fuel cons.100%(L/H): 148 ; Cyl. arrangement: 6L; Intake type: Turbocharged; Type of governor: Electronic governor; Frequency: 50Hz/60Hz; Rated speed: 1500/1800rpm; Phase/Wires: 3 phase 4 wires; Displacement(L): 22.9 ; Dimension(mm): 4100x1750x2300; Weight(kg): 5300; Alternator: Stamford, Marathon, Leroy Somer



DIESEL GENERATORS 10KVA TO 2500KVA

715kVA Perkins Diesel Generator Set(10kVA-2500kVA)



Product Name: 715kVA Perkins Diesel Generator Set(10kVA-2500kVA)
Model No.: PM- X715

Product Abstract:

715kVA Perkins Diesel Generator Set:
Prime Power 520kW/650kVA; Standby Power 572kW/715kVA; Engine model: 2806A-E18TAG2; Fuel cons.100%(L/H): 124 ; Cyl. arrangement: 6L; Intake type: Turbocharged; Type of governor: Electronic governor; Frequency: 50Hz/60Hz; Rated speed: 1500/1800rpm; Phase/Wires: 3 phase 4 wires; Displacement(L): 18.1 ; Dimension(mm): 3500x1600x2050; Weight(kg): 4600; Alternator: Stamford, Marathon, Leroy Somer



DIESEL GENERATORS 10KVA TO 2500KVA

660kVA Perkins Diesel Generator Set(10kVA-2500kVA)



Product Name: 660kVA Perkins Diesel Generator Set(10kVA-2500kVA)
Model No.: PM-X660

Product Abstract:

660kVA Perkins Diesel Generator Set:
Prime Power 480kW/600kVA; Standby Power 528kW/660kVA; Engine model: 2806A-E18TAG1A; Fuel cons.100%(L/H): 123 ; Cyl. arrangement: 6L; Intake type: Turbocharged; Type of governor: Electronic governor; Frequency: 50Hz/60Hz; Rated speed: 1500/1800rpm; Phase/Wires: 3 phase 4 wires; Displacement(L): 18.1 ; Dimension(mm): 3500x1600x2050; Weight(kg): 4000; Alternator: Stamford, Marathon, Leroy Somer



DIESEL GENERATORS 10KVA TO 2500KVA

550kVA Perkins Diesel Generator Set(10kVA-2500kVA)



Product Name: 550kVA Perkins Diesel Generator Set(10kVA-2500kVA)

Model No.: PM-X550

Minimum Order: 1

Product Abstract:

344kVA Perkins Diesel Generator Set:
Prime Power 250kW/313kVA; Standby Power 275kW/344kVA; Engine model: 2206C-E13TAG2; Fuel cons.100%(L/H): 61 ; Cyl. arrangement: 6L; Intake type: Turbocharged; Type of governor: Electronic governor; Frequency: 50Hz/60Hz; Rated speed: 1500/1800rpm; Phase/Wires: 3 phase 4 wires; Displacement(L): 12.5 ; Dimension(mm): 3150x1200x2000; Weight(kg): 3400; Alternator: Stamford, Marathon, Leroy Somer



DIESEL GENERATORS 10KVA TO 2500KVA

495kVA Perkins Diesel Generator Set(10kVA-2500kVA)



Product Name: 495kVA Perkins Diesel Generator Set(10kVA-2500kVA)

Model No.: PM-X495

Minimum Order: 1

Product Abstract:

495kVA Perkins Diesel Generator Set:
Prime Power 360kW/450kVA; Standby Power 396kW/495kVA; Engine model: 2506C-E15TAG1; Fuel cons.100%(L/H): 91 ; Cyl. arrangement: 6L; Intake type: Turbocharged; Type of governor: Electronic governor; Frequency: 50Hz/60Hz; Rated speed: 1500/1800rpm; Phase/Wires: 3 phase 4 wires; Displacement(L): 12.5 ; Dimension(mm): 3150x1200x2000; Weight(kg): 3400; Alternator: Stamford, Marathon, Leroy Somer



DIESEL GENERATORS 10KVA TO 2500KVA

440kVA Perkins Diesel Generator Set(10kVA-2500kVA)



Product Name: 440kVA Perkins Diesel Generator Set(10kVA-2500kVA)
Model No.: PM-X440

Product Abstract:

440kVA Perkins Diesel Generator Set:
Prime Power 320kW/400kVA; Standby Power 352kW/440kVA; Engine model: 2206C-E13TAG3; Fuel cons.100%(L/H): 78 ; Cyl. arrangement: 6L; Intake type: Turbocharged; Type of governor: Electronic governor; Frequency: 50Hz/60Hz; Rated speed: 1500/1800rpm; Phase/Wires: 3 phase 4 wires; Displacement(L): 12.5 ; Dimension(mm): 3250x1200x2000; Weight(kg): 3500; Alternator: Stamford, Marathon, Leroy Somer



DIESEL GENERATORS 10KVA TO 2500KVA

385kVA Perkins Diesel Generator Set(10kVA-2500kVA)



Product Name: 385kVA Perkins Diesel Generator Set(10kVA-2500kVA)

Model No.: PM-X385

Minimum Order: 1

Product Abstract:

385kVA Perkins Diesel Generator Set:
Prime Power 280kW/350kVA; Standby
Power 208kW/385kVA; Engine model:
2206C-E13TAG2; Fuel

cons.100%(L/H): 69 ; Cyl. arrangement:
6L; Intake type: Turbocharged; Type of
governor: Electronic governor;

Frequency: 50Hz/60Hz; Rated speed:

1500/1800rpm; Phase/Wires: 3 phase 4
wires; Displacement(L): 12.5 ;

Dimension(mm): 3150x1200x2000;

Weight(kg): 3450; Alternator: Stamford,
Marathon, Leroy Somer



DIESEL GENERATORS 10KVA TO 2500KVA

344kVA Perkins Diesel Generator Set(10kVA-2500kVA)



Product Name: 344kVA Perkins Diesel Generator Set(10kVA-2500kVA)

Model No.: PM-X344

Minimum Order: 1

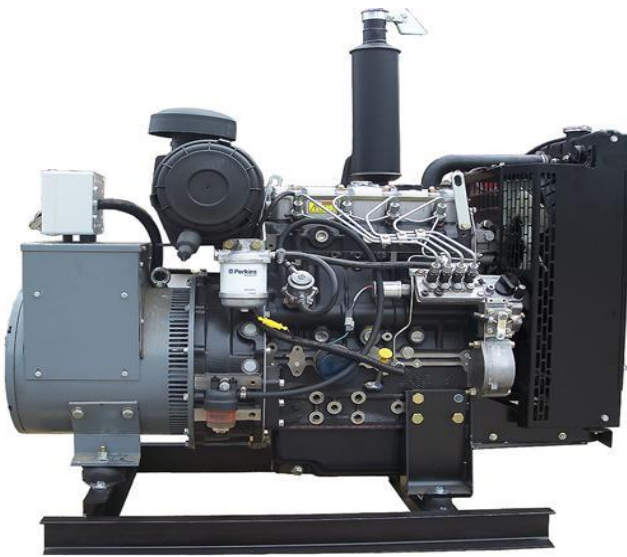
Product Abstract:

344kVA Perkins Diesel Generator Set:
Prime Power 250kW/313kVA; Standby Power 275kW/344kVA; Engine model: 2206C-E13TAG2; Fuel cons.100%(L/H): 61 ; Cyl. arrangement: 6L; Intake type: Turbocharged; Type of governor: Electronic governor; Frequency: 50Hz/60Hz; Rated speed: 1500/1800rpm; Phase/Wires: 3 phase 4 wires; Displacement(L): 12.5 ; Dimension(mm): 3150x1200x2000; Weight(kg): 3400; Alternator: Stamford, Marathon, Leroy Somer



DIESEL GENERATORS 10KVA TO 2500KVA

275kVA Perkins Diesel Generator Set(10kVA-2500kVA)



Product Name: 275kVA Perkins Diesel Generator Set(10kVA-2500kVA)

Model No.: PM-X275

Minimum Order: 1

Product Abstract:

275kVA Perkins Diesel Generator Set:
Prime Power 200kW/250kVA; Standby Power 220kW/275kVA; Engine model: 1306C-E87TAG6; Fuel cons.100%(L/H): 47 ; Cyl. arrangement: 6L; Intake type: Turbocharged; Type of governor: Electronic governor; Frequency: 50Hz/60Hz; Rated speed: 1500/1800rpm; Phase/Wires: 3 phase 4 wires; Displacement(L): 8.7 ; Dimension(mm): 2600x1050x1600; Weight(kg): 2450; Alternator: Stamford, Marathon, Leroy Somer



DIESEL GENERATORS 10KVA TO 2500KVA

248kVA Perkins Diesel Generator Set(10kVA-2500kVA)



Product Name: 248kVA Perkins Diesel Generator Set(10kVA-2500kVA)

Model No.: PM-X248

Minimum Order: 1

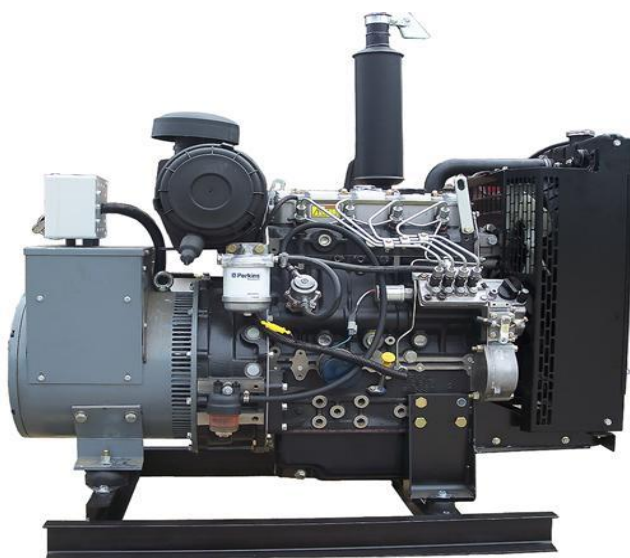
Product Abstract:

248kVA Perkins Diesel Generator Set:
Prime Power 180kW/225kVA; Standby Power 198kW/248kVA; Engine model: 1306C-E87TAG4; Fuel cons.100%(L/H): 44 ; Cyl. arrangement: 6L; Intake type: Turbocharged; Type of governor: Electronic governor; Frequency: 50Hz/60Hz; Rated speed: 1500/1800rpm; Phase/Wires: 3 phase 4 wires; Displacement(L): 8.7 ; Dimension(mm): 2600x1050x1600; Weight(kg): 2450; Alternator: Stamford, Marathon, Leroy SomeR



DIESEL GENERATORS 10KVA TO 2500KVA

220kVA Perkins Diesel Generator Set(10kVA-2500kVA)



Product Name: 220kVA Perkins Diesel Generator Set(10kVA-2500kVA)

Model No.: PM-X220

Minimum Order: 1

Product Abstract:

220kVA Perkins Diesel Generator Set:

Prime Power 160kW/200kVA; Standby

Power 176kW/220kVA; Engine model:

1306C-E87TAG3; Fuel

cons.100%(L/H): 39 ; Cyl. arrangement:

6L; Intake type: Turbocharged; Type of

governor: Electronic governor;

Frequency: 50Hz/60Hz; Rated speed:

1500/1800rpm; Phase/Wires: 3 phase 4

wires; Displacement(L): 6.6 ;

Dimension(mm): 2600x1050x1600;

Weight(kg): 920; Alternator: Stamford,

Marathon, Leroy SomeR



DIESEL GENERATORS 10KVA TO 2500KVA

198kVA Perkins Diesel Generator Set(10kVA-2500kVA)



Product Name: 198kVA Perkins Diesel Generator Set(10kVA-2500kVA)

Model No.: PM-X198

Minimum Order: 1

Product Abstract:

198kVA Perkins Diesel Generator Set:
Prime Power 144kW/180kVA; Standby Power 158kW/198kVA; Engine model: 1006C-E66TAG4; Fuel cons.100%(L/H): 35 ; Cyl. arrangement: 6L; Intake type: Turbocharged; Type of governor: Electronic governor; Frequency: 50Hz/60Hz; Rated speed: 1500/1800rpm; Phase/Wires: 3 phase 4 wires; Displacement(L): 6.6 ; Dimension(mm): 2400x850x1400; Weight(kg): 1700; Alternator: Stamford, Marathon, Leroy Somer



DIESEL GENERATORS 10KVA TO 2500KVA

165kVA Perkins Diesel Generator Set(10kVA-2500kVA)



Product Name: 165kVA Perkins Diesel Generator Set(10kVA-2500kVA)
Model No.: PM-X165
Minimum Order: 1

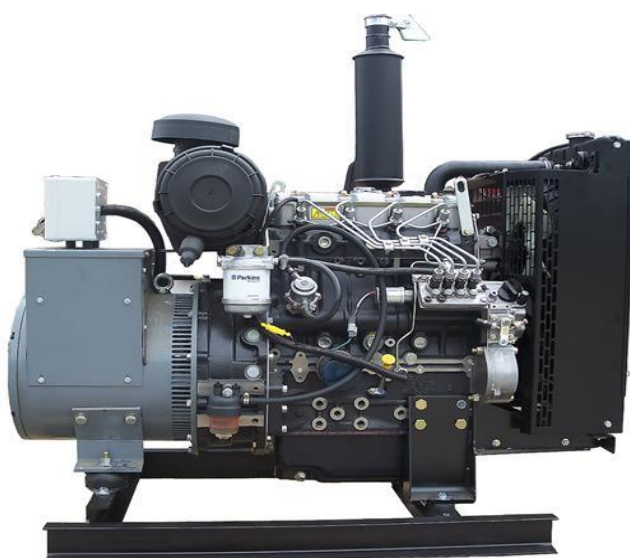
Product Abstract:

165kVA Perkins Diesel Generator Set:
Prime Power 120kW/150kVA; Standby Power 132kW/165kVA; Engine model: 1006TAG2; Fuel cons.100%(L/H): 29 ; Cyl. arrangement: 6L; Intake type: Turbocharged; Type of governor: Electronic governor; Frequency: 50Hz/60Hz; Rated speed: 1500/1800rpm; Phase/Wires: 3 phase 4 wires; Displacement(L): 5.99 ; Dimension(mm): 2350x800x1200; Weight(kg): 920; Alternator: Stamford, Marathon, Leroy SomeR



DIESEL GENERATORS 10KVA TO 2500KVA

151kVA Perkins Diesel Generator Set(10kVA-2500kVA)



Product Name: 151kVA Perkins Diesel Generator Set(10kVA-2500kVA)
Model No.: PM-X151
Minimum Order: 1

Product Abstract:

151kVA Perkins Diesel Generator Set:
Prime Power 110kW/138kVA; Standby Power 121kW/151kVA; Engine model: 1006TAG; Fuel cons.100%(L/H): 27 ; Cyl. arrangement: 6L; Intake type: Turbocharged; Type of governor: Electronic governor; Frequency: 50Hz/60Hz; Rated speed: 1500/1800rpm; Phase/Wires: 3 phase 4 wires; Displacement(L): 5.99 ; Dimension(mm): 2350x800x1200; Weight(kg): 920; Alternator: Stamford, Marathon, Leroy Somer



DIESEL GENERATORS 10KVA TO 2500KVA

110kVA Perkins Diesel Generator Set(10kVA-2500kVA)



Product Name: 110kVA Perkins Diesel Generator Set(10kVA-2500kVA)

Model No.: PM-X110

Minimum Order: 1

Product Abstract:

110kVA Perkins Diesel Generator Set:
Prime Power 80kW/100kVA; Standby Power 88kW/110kVA; Engine model: 1104C-44TAG2; Fuel cons.100%(L/H): 19 ; Cyl. arrangement: 4L; Intake type: Turbocharged; Type of governor: Electronic governor; Frequency: 50Hz/60Hz; Rated speed: 1500/1800rpm; Phase/Wires: 3 phase 4 wires; Displacement(L): 4.41 ; Dimension(mm): 1950x730x750; Weight(kg): 1250; Alternator: Stamford, Marathon, Leroy Somer



DIESEL GENERATORS 10KVA TO 2500KVA

88kVA Perkins Diesel Generator Set(10kVA-2500kVA)



Product Name: 88kVA Perkins Diesel Generator Set(10kVA-2500kVA)

Model No.: PM-X88

Minimum Order: 1

Product Abstract:

88kVA Perkins Diesel Generator Set:

Prime Power 64kW/80kVA; Standby

Power 70kW/88kVA; Engine model:

1104A-44TG2; Fuel cons.100%(L/H):

16 ; Cyl. arrangement: 4L; Intake type:

Turbocharged; Type of governor:

Electronic governor; Frequency:

50Hz/60Hz; Rated speed:

1500/1800rpm; Phase/Wires: 3 phase 4

wires; Displacement(L): 4.4 ;

Dimension(mm): 1950x750x1250;

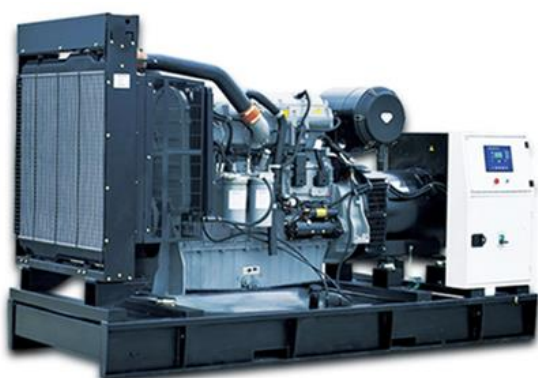
Weight(kg): 1250; Alternator: Stamford,

Marathon, Leroy Somer



DIESEL GENERATORS 10KVA TO 2500KVA

72kVA Perkins Diesel Generator Set(10kVA-2500kVA)



Product Name: 72kVA Perkins Diesel Generator Set(10kVA-2500kVA)

Model No.: PM-X72

Minimum Order: 1

Product Abstract:

72kVA Perkins Diesel Generator Set:

Prime Power 52kW/65kVA; Standby

Power 57kW/72kVA; Engine model:

1104A-44TG1; Fuel cons.100%(L/H):

15 ; Cyl. arrangement: 4L; Intake type:

Turbocharged; Type of governor:

Electronic governor; Frequency:

50Hz/60Hz; Rated speed:

1500/1800rpm; Phase/Wires: 3 phase 4

wires; Displacement(L): 4 ;

Dimension(mm): 1950x750x1250;

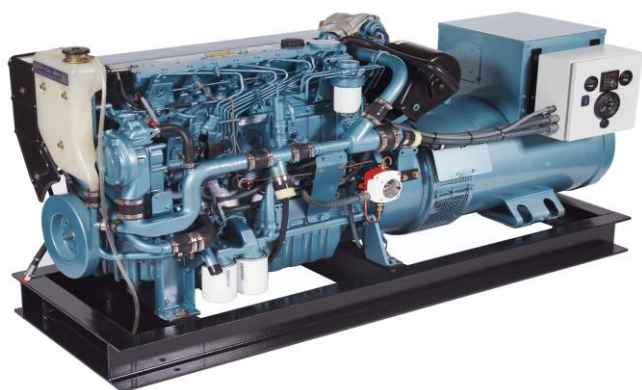
Weight(kg): 920; Alternator: Stamford,

Marathon, Leroy Somer



DIESEL GENERATORS 10KVA TO 2500KVA

66kVA Perkins Diesel Generator Set(10kVA-2500kVA)



Product Name: 66kVA Perkins Diesel Generator Set(10kVA-2500kVA)
Model No.: PM-X66
Minimum Order: 1

Product Abstract:

66kVA Perkins Diesel Generator Set:
Prime Power 48kW/60kVA; Standby Power 53kW/66kVA; Engine model: 1103A-33TG2; Fuel cons.100%(L/H): 10 ; Cyl. arrangement: 3L; Intake type: Turbocharged; Type of governor: Electronic governor; Frequency: 50Hz/60Hz; Rated speed: 1500/1800rpm; Phase/Wires: 3 phase 4 wires; Displacement(L): 3.3 ; Dimension(mm): 1750x750x1250; Weight(kg): 1030; Alternator: Stamford, Marathon, Leroy Somer



DIESEL GENERATORS 10KVA TO 2500KVA

55kVA Perkins Diesel Generator Set(10kVA-2500kVA)



Product Name: 55kVA Perkins Diesel Generator Set(10kVA-2500kVA)

Model No.: PM-X55

Minimum Order: 1

Product Abstract:

55kVA Perkins Diesel Generator Set:
Prime Power 40kW/50kVA; Standby Power 44kW/55kVA; Engine model: 1103A-33TG2; Fuel cons.100%(L/H): 10 ; Cyl. arrangement: 3L; Intake type: Turbocharged; Type of governor: Electronic governor; Frequency: 50Hz/60Hz; Rated speed: 1500/1800rpm; Phase/Wires: 3 phase 4 wires; Displacement(L): 3.3 ; Dimension(mm): 1750x750x1250; Weight(kg): 1000; Alternator: Stamford, Marathon, Leroy Somer



DIESEL GENERATORS 10KVA TO 2500KVA

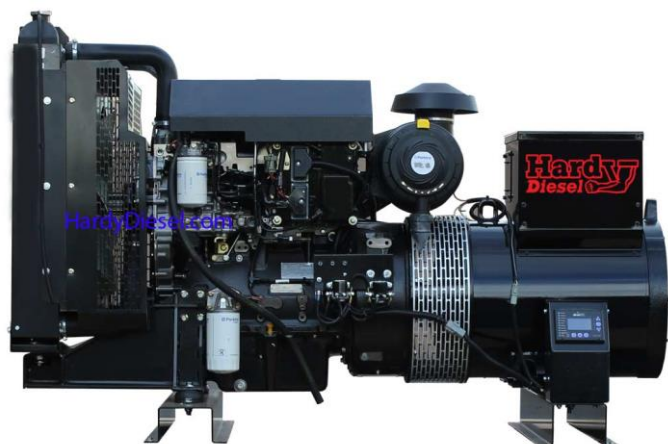
47kVA Perkins Diesel Generator Set(10kVA-2500kVA)



Product Name: 47kVA Perkins Diesel Generator Set(10kVA-2500kVA)
Model No.: PM-X47
Minimum Order: 1

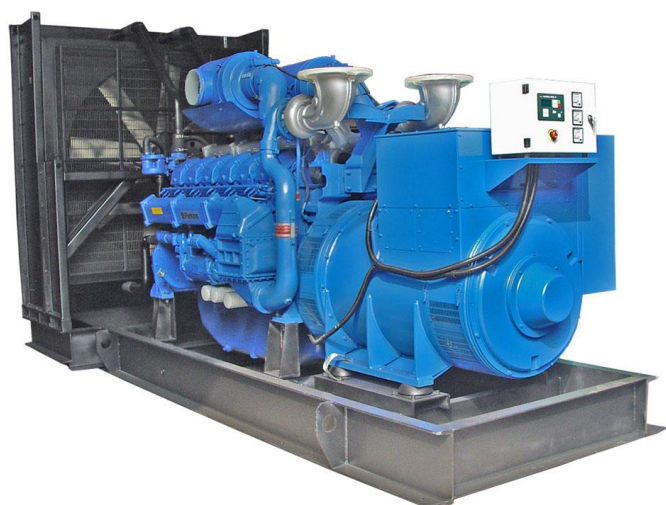
Product Abstract:

47kVA Perkins Diesel Generator Set:
Prime Power 34kW/43kVA; Standby Power 37kW/47kVA; Engine model: 1103A-33TG1; Fuel cons.100%(L/H): 8 ; Cyl. arrangement: 3L; Intake type: Turbocharged; Type of governor: Electronic governor; Frequency: 50Hz/60Hz; Rated speed: 1500/1800rpm; Phase/Wires: 3 phase 4 wires; Displacement(L): 3.3 ; Dimension(mm): 1600x730x1200; Weight(kg): 920; Alternator: Stamford, Marathon, Leroy Somer



DIESEL GENERATORS 10KVA TO 2500KVA

41kVA Perkins Diesel Generator Set(10kVA-2500kVA)



Product Name: 41kVA Perkins Diesel Generator Set(10kVA-2500kVA)

Model No.: PM-X41

Minimum Order: 1

Product Abstract:

41kVA Perkins Diesel Generator Set:

Prime Power 30kW/38kVA; Standby

Power 33kW/41kVA; Engine model:

1103A-33TG1; Fuel cons.100%(L/H):

8 ; Cyl. arrangement: 3L; Intake type:

Turbocharged; Type of governor:

Electronic governor; Frequency:

50Hz/60Hz; Rated speed:

1500/1800rpm; Phase/Wires: 3 phase 4

wires; Displacement(L): 3.3 ;

Dimension(mm): 1600x730x1200;

Weight(kg): 920; Alternator: Stamford,

Marathon, Leroy Somer



DIESEL GENERATORS 10KVA TO 2500KVA

33kVA Perkins Diesel Generator Set(10kVA-2500kVA)



Product Name: 33kVA Perkins Diesel Generator Set(10kVA-2500kVA)

Model No.: PM-X33

Minimum Order: 1

Product Abstract:

33kVA Perkins Diesel Generator Set:

Prime Power 24kW/30kVA; Standby

Power 26kW/33kVA; Engine model:

1103A-33G; Fuel cons.100%(L/H): 6 ;

Cyl. arrangement: 3L; Intake type:

Turbocharged; Type of governor:

Electronic governor; Frequency:

50Hz/60Hz; Rated speed:

1500/1800rpm; Phase/Wires: 3 phase 4

wires; Displacement(L): 3.3 ;

Dimension(mm): 1500x730x1150;

Weight(kg): 800; Alternator: Stamford,

Marathon, Leroy Somer



DIESEL GENERATORS 10KVA TO 2500KVA

28kVA Perkins Diesel Generator Set(10kVA-2500kVA)



Product Name: 28kVA Perkins Diesel Generator Set(10kVA-2500kVA)

Model No.: PM-X28

Minimum Order: 1

Product Abstract:

28kVA Perkins Diesel Generator Set:
Prime Power 20kW/25kVA; Standby Power 22kW/28kVA; Engine model: 404D-22TG; Fuel cons.100%(L/H): 6 ; Cyl. arrangement: 4L; Intake type: Turbocharged; Type of governor: Electronic governor; Frequency: 50Hz/60Hz; Rated speed: 1500/1800rpm; Phase/Wires: 3 phase 4 wires; Displacement(L): 2.5 ; Dimension(mm): 1400x650x1100; Weight(kg): 550; Alternator: Stamford, Marathon, Leroy Somer



DIESEL GENERATORS 10KVA TO 2500KVA

22kVA Perkins Diesel Generator Set(10kVA-2500kVA)



Product Name: 22kVA Perkins Diesel Generator Set(10kVA-2500kVA)
Model No.: BPX22
Minimum Order: 1

Product Abstract:

22kVA Perkins Diesel Generator Set:
Prime Power 16kW/20kVA; Standby Power 18kW/22kVA; Engine model: 404D-22G; Fuel cons.100%(L/H): 5 ; Cyl. arrangement: 4L; Intake type: Turbocharged; Type of governor: Electronic governor; Frequency: 50Hz/60Hz; Rated speed: 1500/1800rpm; Phase/Wires: 3 phase 4 wires; Displacement(L): 2.2 ; Dimension(mm): 1350x600x950; Weight(kg): 530; Alternator: Stamford, Marathon, Leroy Somer



DIESEL GENERATORS 10KVA TO 2500KVA

17kVA Perkins Diesel Generator Set(10kVA-2500kVA)



Product Name: 17kVA Perkins Diesel Generator Set(10kVA-2500kVA)

Model No.: BPX17

Minimum Order: 1

Product Abstract:

17kVA Perkins Diesel Generator Set:

Prime Power 12kW/15kVA; Standby

Power 13kW/17kVA; Engine model:

404D-22G; Fuel cons.100%(L/H): 3 ;

Cyl. arrangement: 4L; Intake type:

Turbocharged; Type of governor:

Electronic governor; Frequency:

50Hz/60Hz; Rated speed:

1500/1800rpm; Phase/Wires: 3 phase 4

wires; Displacement(L): 2.2 ;

Dimension(mm): 1350x600x950;

Weight(kg): 500; Alternator: Stamford,

Marathon, Leroy Somer



DIESEL GENERATORS 10KVA TO 2500KVA

14kVA Perkins Diesel Generator Set(10kVA-2500kVA)



Product Name: 14kVA Perkins Diesel Generator Set(10kVA-2500kVA)

Model No.: PM-X14

Minimum Order: 1

Product Abstract:

14kVA Perkins Diesel Generator Set:

Prime Power 10kW/13kVA; Standby

Power 11kW/14kVA; Engine model:

403D-15G; Fuel cons.100%(L/H): 3 ;

Cyl. arrangement: 3L; Intake type:

Turbocharged; Type of governor:

Electronic governor; Frequency:

50Hz/60Hz; Rated speed:

1500/1800rpm; Phase/Wires: 3 phase 4

wires; Displacement(L): 1.5 ;

Dimension(mm): 1200x600x920;

Weight(kg): 430; Alternator: Stamford,

Marathon, Leroy Somer



DIESEL GENERATORS 10KVA TO 2500KVA

10kVA Perkins Diesel Generator Set(10kVA-2500kVA)



Product Name: 10kVA Perkins Diesel Generator Set(10kVA-2500kVA)
Model No.: PM-X10
Minimum Order: 1

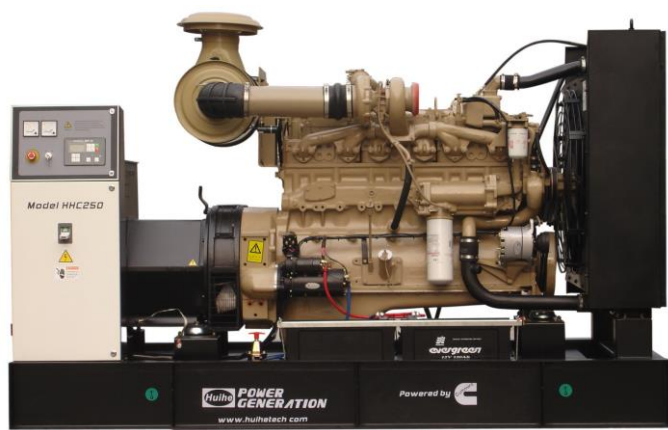
Product Abstract:

10kVA Perkins Diesel Generator Set:
Prime Power 7.2kW/9kVA; Standby Power 8kW/10kVA; Engine model: 403D-11G; Fuel cons.100%(L/H): 2 ; Cyl. arrangement: 3L; Intake type: Turbocharged; Type of governor: Electronic governor; Frequency: 50Hz/60Hz; Rated speed: 1500/1800rpm; Phase/Wires: 3 phase 4 wires; Displacement(L): 1.13 ; Dimension(mm): 1100x550x890; Weight(kg): 360; Alternator: Stamford, Marathon, Leroy Somer



DIESEL GENERATORS (27.5kVA-1675kVA)

27.5kVA Cummins Diesel Generator Set(27.5kVA-1675kVA)



Product Name: 27.5kVA Cummins Diesel Generator Set(27.5kVA-1675kVA)

Model No.: PM-X25

Minimum Order: 1

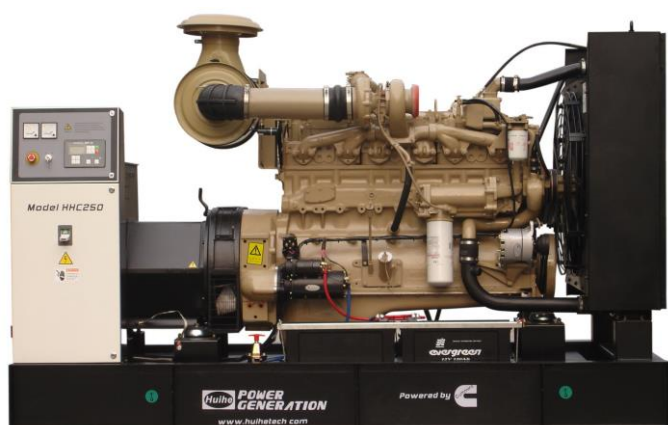
Product Abstract:

27.5kVA Cummins Diesel Generator:
Prime Power 20kW/25kVA; Standby Power 22kW/27.5kVA; Engine model: 4B3.9-G2; Fuel cons.100%(L/H): 4.5 ; Cyl. arrangement: 4L; Intake type: Turbocharged; Bore x Stroke(mm):102x120; Type of governor: Electronic governor; Frequency: 50Hz/60Hz; Rated speed: 1500/1800rpm; Phase/Wires: 3 phase 4 wires; Displacement(L): 3.9 ; Dimension(mm): 1720x740x1120; Weight(kg): 780; Alternator: Stamford, Marathon, Leroy Somer



DIESEL GENERATORS

30kVA Cummins Diesel Generator Set(10kVA-2500kVA)



Product Name: 30kVA Cummins Diesel Generator Set(27.5kVA-1675kVA)
Model No.: PM-X30
Minimum Order: 1

Product Abstract:

30kVA Cummins Diesel Generator:
Prime Power 22kW/28kVA; Standby Power 24kW/30kVA; Engine model: 4B3.9-G2; Fuel cons.100%(L/H): 5.5 ; Cyl. arrangement: 4L; Intake type: Turbocharged; Bore x Stroke(mm):102x120; Type of governor: Electronic governor; Frequency: 50Hz/60Hz; Rated speed: 1500/1800rpm; Phase/Wires: 3 phase 4 wires; Displacement(L): 3.9 ; Dimension(mm): 1720x740x1120; Weight(kg): 800; Alternator: Stamford, Marathon, Leroy Somer



DIESEL GENERATORS 10KVA TO 2500KVA

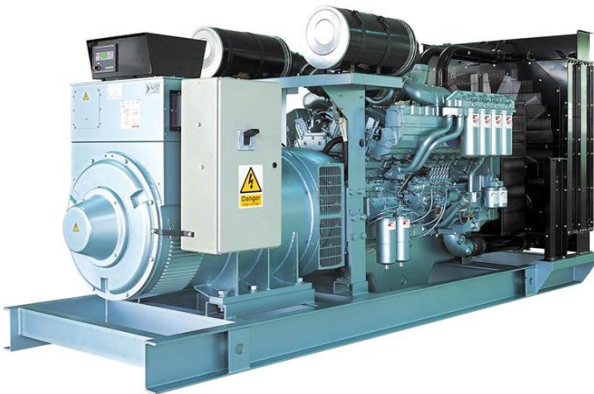
40kVA Cummins Diesel Generator Set(10kVA-2500kVA)



Product Name: 40kVA Cummins Diesel Generator Set(27.5kVA-1675kVA)
Model No.: PM-X40
Minimum Order: 1

Product Abstract:

40kVA Cummins Diesel Generator:
Prime Power 30kW/38kVA; Standby Power 33kW/40kVA; Engine model: 4BT3.9-G2; Fuel cons.100%(L/H): 7.5 ; Cyl. arrangement: 4L; Intake type: Turbocharged; Bore x Stroke(mm):102x120; Type of governor: Electronic governor; Frequency: 50Hz/60Hz; Rated speed: 1500/1800rpm; Phase/Wires: 3 phase 4 wires; Displacement(L): 3.9 ; Dimension(mm): 1720x820x1400; Weight(kg): 1080; Alternator: Stamford, Marathon, Leroy Somer



DIESEL GENERATORS

55kVA Cummins Diesel Generator Set(10kVA-2500kVA)



Product Name: 55kVA Cummins Diesel Generator Set(27.5kVA-1675kVA)
Model No.: PM-X55
Minimum Order: 1

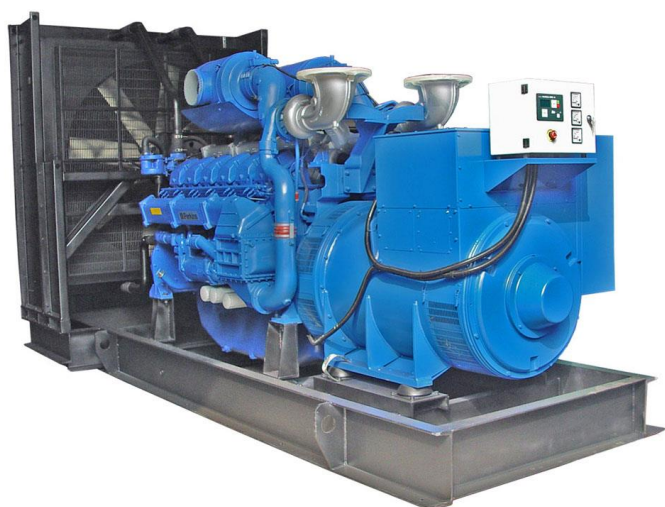
Product Abstract:

55kVA Cummins Diesel Generator:
Prime Power 50kW/50kVA; Standby Power 44kW/55kVA; Engine model: 4BTA3.9-G2; Fuel cons.100%(L/H): 10 ; Cyl. arrangement: 4L; Intake type: Turbocharged; Bore x Stroke(mm):102x120; Type of governor: Electronic governor; Frequency: 50Hz/60Hz; Rated speed: 1500/1800rpm; Phase/Wires: 3 phase 4 wires; Displacement(L): 3.9 ; Dimension(mm): 1900x820x1480; Weight(kg): 1050; Alternator: Stamford, Marathon, Leroy SomeR



DIESEL GENERATORS 10KVA TO 2500KVA

70kVA Cummins Diesel Generator Set(10kVA-2500kVA)



Product Name: 70kVA Cummins Diesel Generator Set(27.5kVA-1675kVA)
Model No.: PM-CX70
Minimum Order: 1

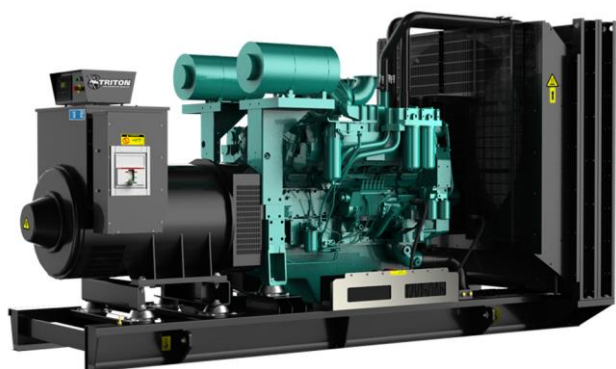
Product Abstract:

70kVA Cummins Diesel Generator:
Prime Power 50kW/63kVA; Standby Power 56kW/70kVA; Engine model: 4BTA3.9-G2; Fuel cons.100%(L/H): 12.5 ; Cyl. arrangement: 4L; Intake type: Turbocharged; Bore x Stroke(mm):102x120; Type of governor: Electronic governor; Frequency: 50Hz/60Hz; Rated speed: 1500/1800rpm; Phase/Wires: 3 phase 4 wires; Displacement(L): 3.9 ; Dimension(mm): 1900x820x1480; Weight(kg): 1080; Alternator: Stamford, Marathon, Leroy Somer



DIESEL GENERATORS 10KVA TO 2500KVA

100kVA Cummins Diesel Generator Set(10kVA-2500kVA)



Product Name: 100kVA Cummins Diesel Generator Set(27.5kVA-1675kVA)
Model No.: PM-X100
Minimum Order: 1

Product Abstract:

100kVA Cummins Diesel Generator:
Prime Power 75kW/93kVA; Standby Power 82kW/100kVA; Engine model: 6BT5.9-G2; Fuel cons.100%(L/H): 18.9 ; Cyl. arrangement: 6L; Intake type: Turbocharged; Bore x Stroke(mm):102x121; Type of governor: Electronic governor; Frequency: 50Hz/60Hz; Rated speed: 1500/1800rpm; Phase/Wires: 3 phase 4 wires; Displacement(L): 5.9 ; Dimension(mm): 2050x850x1500; Weight(kg): 1380; Alternator: Stamford, Marathon, Leroy Somer



DIESEL GENERATORS 10KVA TO 2500KVA

120kVA Cummins Diesel Generator Set(10kVA-2500kVA)



Product Name: 120kVA Cummins Diesel Generator Set(27.5kVA-1675kVA)
Model No.: PM-X120
Minimum Order: 1

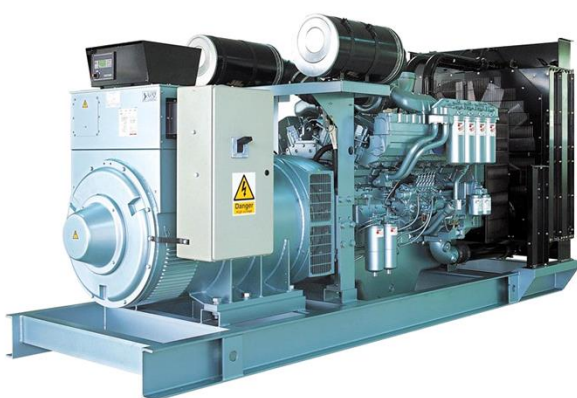
Product Abstract:

120kVA Cummins Diesel Generator:
Prime Power 90kW/112kVA; Standby Power 99kW/120kVA; Engine model: 6BT5.9-G2; Fuel cons.100%(L/H): 22.7 ; Cyl. arrangement: 6L; Intake type: Turbocharged; Bore x Stroke(mm):102x122; Type of governor: Electronic governor; Frequency: 50Hz/60Hz; Rated speed: 1500/1800rpm; Phase/Wires: 3 phase 4 wires; Displacement(L): 5.9 ; Dimension(mm): 2050x850x1500; Weight(kg): 1450; Alternator: Stamford, Marathon, Leroy Somer

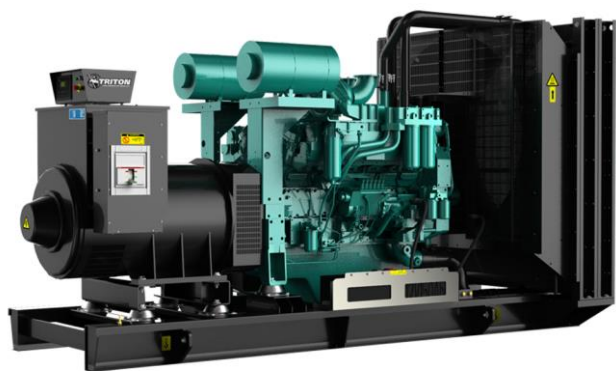


DIESEL GENERATORS 10KVA TO 2500KVA

130kVA Cummins Diesel Generator Set(10kVA-2500kVA)



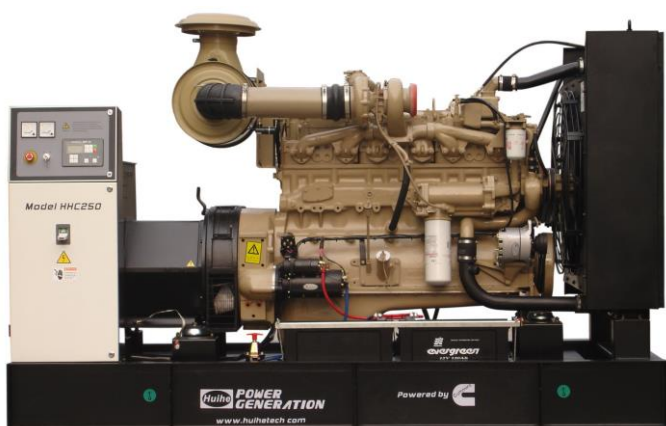
Product Name: 130kVA Cummins Diesel Generator Set(27.5kVA-1675kVA)
Model No.: PM-X130
Minimum Order: 1



Product Abstract:
130kVA Cummins Diesel Generator:
Prime Power 100kW/125kVA; Standby Power 110kW/130kVA; Engine model: 6BTA5.9-G2; Fuel cons.100%(L/H): 25.3 ; Cyl. arrangement: 6L; Intake type: Turbocharged; Bore x Stroke(mm):102x120; Type of governor: Electronic governor; Frequency: 50Hz/60Hz; Rated speed: 1500/1800rpm; Phase/Wires: 3 phase 4 wires; Displacement(L): 5.9 ; Dimension(mm): 2050x850x1500; Weight(kg): 1470; Alternator: Stamford, Marathon, Leroy Somer

DIESEL GENERATORS 10KVA TO 2500KVA

150kVA Cummins Diesel Generator Set(10kVA-2500kVA)



Product Name: 150kVA Cummins Diesel Generator Set(27.5kVA-1675kVA)

Model No.: PM-X150

Minimum Order: 1

Product Abstract:

150kVA Cummins Diesel Generator:

Prime Power 110kW/137kVA; Standby

Power 120kW/150kVA; Engine model:

6BTAA5.9-G2; Fuel cons.100%(L/H):

27.8 ; Cyl. arrangement: 6L; Intake type:

Turbocharged; Bore x

Stroke(mm):102x120; Type of governor:

Electronic governor; Frequency:

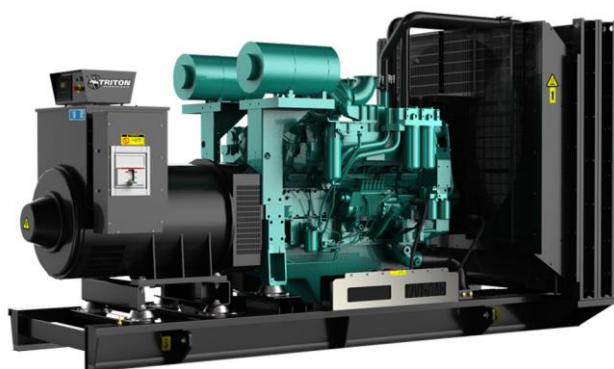
50Hz/60Hz; Rated speed:

1500/1800rpm; Phase/Wires: 3 phase 4

wires; Displacement(L): 5.9 ;

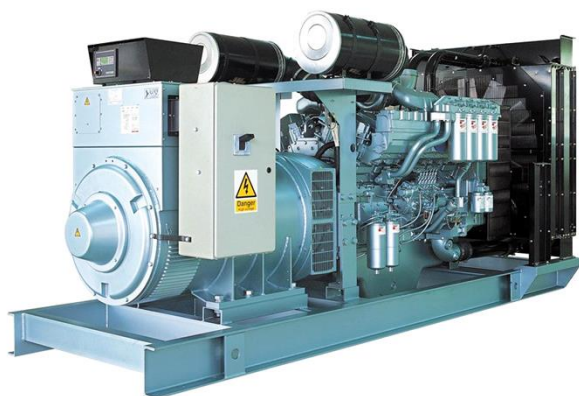
Dimension(mm): 2150x850x1500;

Weight(kg): 1485 ; Alternator: Stamford, Marathon, Leroy Somer



DIESEL GENERATORS 10KVA TO 2500KVA

165kVA Cummins Diesel Generator Set(10kVA-2500kVA)



Product Name: 165kVA Cummins Diesel Generator Set(27.5kVA-1675kVA)

Model No.: PM-X165

Minimum Order: 1

Product Abstract:

165kVA Cummins Diesel Generator:
Prime Power 120kW/150kVA; Standby Power 132kW/165kVA; Engine model: 6BTAA5.9-G2 ; Fuel cons.100%(L/H): 30.3 ; Cyl. arrangement: 6L; Intake type: Turbocharged; Bore x Stroke(mm):102x120; Type of governor: Electronic governor; Frequency: 50Hz/60Hz; Rated speed: 1500/1800rpm; Phase/Wires: 3 phase 4 wires; Displacement(L): 5.9 ; Dimension(mm): 3890x1100x1652; Weight(kg): 2795; Alternator: Stamford, Marathon, Leroy Somer



DIESEL GENERATORS 10KVA TO 2500KVA

200kVA Cummins Diesel Generator Set(10kVA-2500kVA)



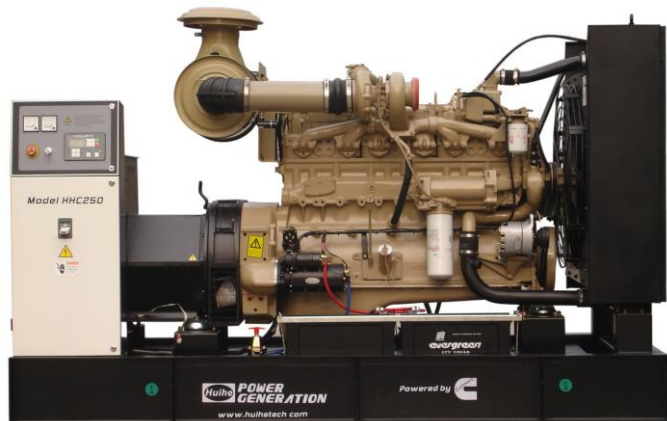
Product Name: 200kVA Cummins Diesel Generator Set(27.5kVA-1675kVA)

Model No.: PM-X200

Minimum Order: 1

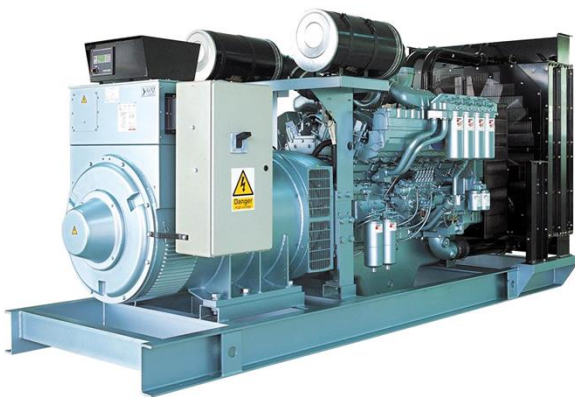
Product Abstract:

200kVA Cummins Diesel Generator:
Prime Power 150kW/188kVA; Standby Power 165kW/200kVA; Engine model: 6CTA8.3; Fuel cons.100%(L/H): 37.4 ; Cyl. arrangement: 6L; Intake type: Turbocharged; Bore x Stroke(mm):114x135; Type of governor: Electronic governor; Frequency: 50Hz/60Hz; Rated speed: 1500/1800rpm; Phase/Wires: 3 phase 4 wires; Displacement(L): 8.3 ; Dimension(mm): 2400x1000x1500; Weight(kg): 1880; Alternator: Stamford, Marathon, Leroy Somer



DIESEL GENERATORS 10KVA TO 2500KVA

250kVA Cummins Diesel Generator Set(10kVA-2500kVA)



Product Name: 250kVA Cummins Diesel Generator Set(27.5kVA-1675kVA)

Model No.: PM-X250

Minimum Order: 1

Product Abstract:

250kVA Cummins Diesel Generator:
Prime Power 182kW/228kVA; Standby Power 200kW/250kVA; Engine model: 6CTAA8.3-G2; Fuel cons.100%(L/H): 45.3 ; Cyl. arrangement: 6L; Intake type: Turbocharged; Bore x Stroke(mm):114x135; Type of governor: Electronic governor; Frequency: 50Hz/60Hz; Rated speed: 1500/1800rpm; Phase/Wires: 3 phase 4 wires; Displacement(L): 8.3 ; Dimension(mm): 2500x1000x1500; Weight(kg): 1950; Alternator: Stamford, Marathon, Leroy Somer



DIESEL GENERATORS 10KVA TO 2500KVA

275kVA Cummins Diesel Generator Set(10kVA-2500kVA)



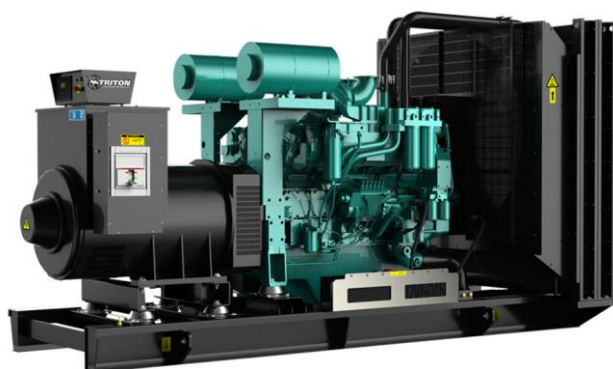
Product Name: 275kVA Cummins Diesel Generator Set(27.5kVA-1675kVA)

Model No.: PM-X275

Minimum Order: 1

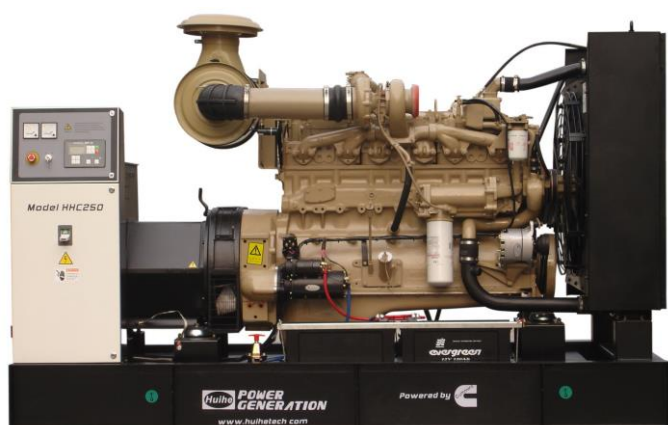
Product Abstract:

275kVA Cummins Diesel Generator:
Prime Power 200kW/250kVA; Standby Power 220kW/275kVA; Engine model: 6LTAA8.9-G2; Fuel cons.100%(L/H): 49.3 ; Cyl. arrangement: 6L; Intake type: Turbocharged; Bore x Stroke(mm):114x145; Type of governor: Electronic governor; Frequency: 50Hz/60Hz; Rated speed: 1500/1800rpm; Phase/Wires: 3 phase 4 wires; Displacement(L): 8.9 ; Dimension(mm): 2600x1000x1500; Weight(kg): 2150; Alternator: Stamford, Marathon, Leroy Somer



DIESEL GENERATORS 10KVA TO 2500KVA

300kVA Cummins Diesel Generator Set(10kVA-2500kVA)



Product Name: 300kVA Cummins Diesel Generator Set(27.5kVA-1675kVA)
Model No.: PM-X300
Minimum Order: 1

Product Abstract:

300kVA Cummins Diesel Generator:
Prime Power 220kW/275kVA; Standby Power 242kW/300kVA; Engine model: NTA855-G1A; Fuel cons.100%(L/H): 53.2 ; Cyl. arrangement: 6L; Intake type: Turbocharged; Bore x Stroke(mm):140x152; Type of governor: Electronic governor; Frequency: 50Hz/60Hz; Rated speed: 1500/1800rpm; Phase/Wires: 3 phase 4 wires; Displacement(L): 14 ; Dimension(mm): 2995x1100x1652; Weight(kg): 3050; Alternator: Stamford, Marathon, Leroy Somer



DIESEL GENERATORS 10KVA TO 2500KVA

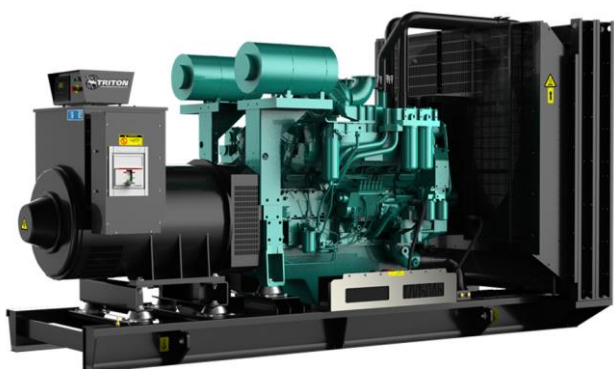
350kVA Cummins Diesel Generator Set(10kVA-2500kVA)



Product Name: 350kVA Cummins Diesel Generator Set(27.5kVA-1675kVA)
Model No.: PM-X350
Minimum Order: 1

Product Abstract:

350kVA Cummins Diesel Generator:
Prime Power 255kW/318kVA; Standby Power 280kW/350kVA; Engine model: NTA855-G1B; Fuel cons.100%(L/H): 61.7; Cyl. arrangement: 6L; Intake type: Turbocharged; Bore x Stroke(mm):140x152; Type of governor: Electronic governor; Frequency: 50Hz/60Hz; Rated speed: 1500/1800rpm; Phase/Wires: 3 phase 4 wires; Displacement(L): 14; Dimension(mm): 2995x1100x1652; Weight(kg): 3100; Alternator: Stamford, Marathon, Leroy Somer



DIESEL GENERATORS 10KVA TO 2500KVA

375kVA Cummins Diesel Generator Set(10kVA-2500kVA)



Product Name: 375kVA Cummins Diesel Generator Set(27.5kVA-1675kVA)
Model No.: PM-X375
Minimum Order: 1

Product Abstract:

375kVA Cummins Diesel Generator:
Prime Power 275kW/344kVA; Standby Power 300kW/375kVA; Engine model: NTA855-G2A; Fuel cons.100%(L/H):66.5 ; Cyl. arrangement: 6L; Intake type: Turbocharged; Bore x Stroke(mm):140x152; Type of governor: Electronic governor; Frequency: 50Hz/60Hz; Rated speed: 1500/1800rpm; Phase/Wires: 3 phase 4 wires; Displacement(L): 14; Dimension(mm): 3090x1100x1652; Weight(kg): 3200; Alternator: Stamford,



DIESEL GENERATORS 10KVA TO 2500KVA

388kVA Cummins Diesel Generator Set(10kVA-2500kVA)



Product Name: 388kVA Cummins Diesel Generator Set(27.5kVA-1675kVA)
Model No.: PM-X388
Minimum Order: 1

Product Abstract:

388kVA Cummins Diesel Generator:
Prime Power 280kW/350kVA; Standby Power 310kW/388kVA; Engine model: NTA855-G4; Fuel cons.100%(L/H): 67.8; Cyl. arrangement: 6L; Intake type: Turbocharged; Bore x Stroke(mm):140x152; Type of governor: Electronic governor; Frequency: 50Hz/60Hz; Rated speed: 1500/1800rpm; Phase/Wires: 3 phase 4 wires; Displacement(L): 14; Dimension(mm): 3090x1100x1652; Weight(kg): 3250; Alternator: Stamford, Marathon, Leroy Somer



DIESEL GENERATORS 10KVA TO 2500KVA

410kVA Cummins Diesel Generator Set(10kVA-2500kVA)



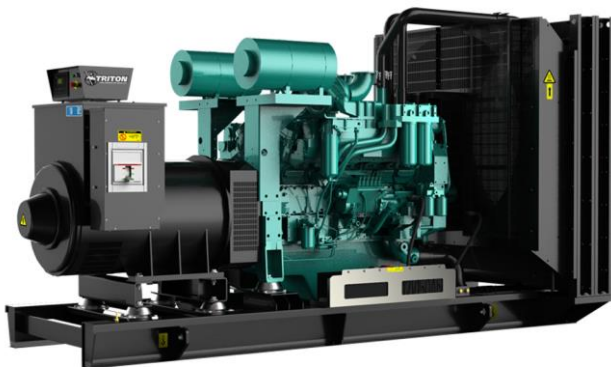
Product Name: 410kVA Cummins Diesel Generator Set(27.5kVA-1675kVA)

Model No.: PM-X410

Minimum Order: 1

Product Abstract:

410kVA Cummins Diesel Generator:
Prime Power 300kW/375kVA; Standby Power 330kW/410kVA; Engine model: KTA19-G2; Fuel cons.100%(L/H): 70.8; Cyl. arrangement: 6L; Intake type: Turbocharged; Bore x Stroke(mm):159x159; Type of governor: Electronic governor; Frequency: 50Hz/60Hz; Rated speed: 1500/1800rpm; Phase/Wires: 3 phase 4 wires; Displacement(L): 19; Dimension(mm): 3160x1100x1700; Weight(kg): 5257; Alternator: Stamford, Marathon, Leroy Somer



DIESEL GENERATORS 10KVA TO 2500KVA

450kVA Cummins Diesel Generator Set(10kVA-2500kVA)



Product Name: 450kVA Cummins Diesel Generator Set(27.5kVA-1675kVA)
Model No.: PM-X450
Minimum Order: 1

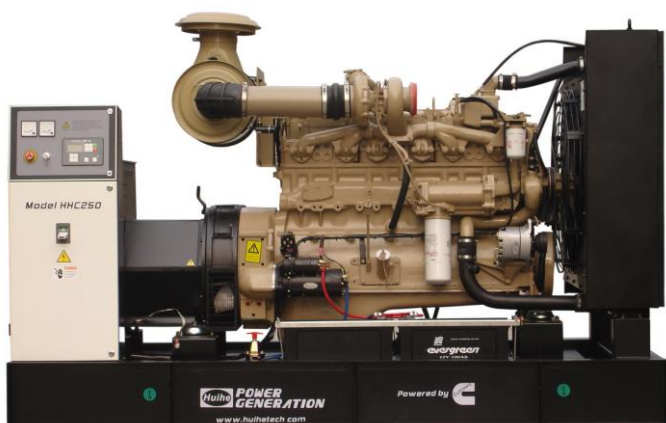
Product Abstract:

450kVA Cummins Diesel Generator:
Prime Power 320kW/400kVA; Standby Power 360kW/40kVA; Fuel cons.100%(L/H): 79.4; Engine model: NTAA855-G7A; Cyl. arrangement: 6L; Intake type: Turbocharged; Bore x Stroke(mm):140x152; Type of governor: Electronic governor; Frequency: 50Hz/60Hz; Rated speed: 1500/1800rpm; Phase/Wires: 3 phase 4 wires; Displacement(L): 14; Dimension(mm): 3160x1100x1700; Weight(kg): 3280; Alternator: Stamford, Marathon, Leroy Somer



DIESEL GENERATORS 10KVA TO 2500KVA

500kVA Cummins Diesel Generator Set(10kVA-2500kVA)



Product Name: 500kVA Cummins Diesel Generator Set(27.5kVA-1675kVA)
Model No.: PM-X500
Minimum Order: 1

Product Abstract:
500kVA Cummins Diesel Generator:
Prime Power 360kW/450kVA; Standby Power 400kW/500kVA; Fuel cons.100%(L/H): 85; Engine model: KTA19-G3; Cyl. arrangement: 6L; Intake type: Turbocharged; Bore x Stroke(mm):159x159; Type of governor: Electronic governor; Frequency: 50Hz/60Hz; Rated speed: 1500/1800rpm; Phase/Wires: 3 phase 4 wires; Displacement(L): 19; Dimension(mm): 3160x1100x1700; Weight(kg): 3300; Alternator: Stamford, Marathon, Leroy Somer



DIESEL GENERATORS 10KVA TO 2500KVA

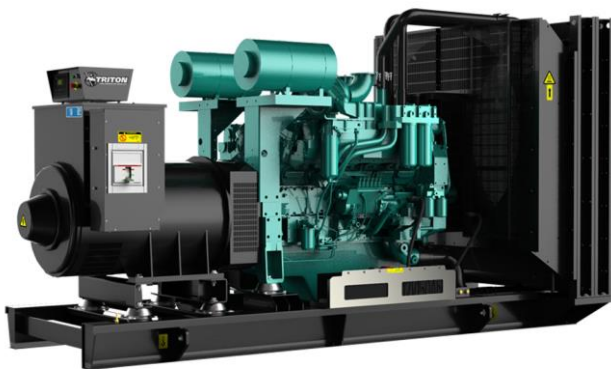
550kVA Cummins Diesel Generator Set(10kVA-2500kVA)



Product Name: 550kVA Cummins Diesel Generator Set(27.5kVA-1675kVA)
Model No.: PM-X550
Minimum Order: 1

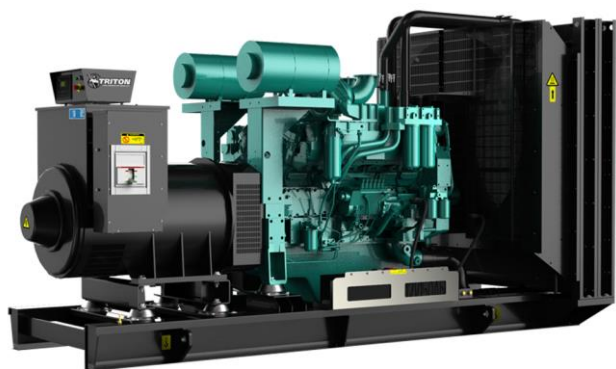
Product Abstract:

550kVA Cummins Diesel Generator:
Prime Power 400kW/500kVA; Standby Power 440kW/550kVA; Fuel cons.100%(L/H): 94.4; Engine model: KTA19-G4; Cyl. arrangement: 6L; Intake type: Turbocharged; Bore x Stroke(mm):159x159; Type of governor: Electronic governor; Frequency: 50Hz/60Hz; Rated speed: 1500/1800rpm; Phase/Wires: 3 phase 4 wires; Displacement(L): 19; Dimension(mm): 3560x1345x1965; Weight(kg): 4100; Alternator: Stamford, Marathon, Leroy Somer



DIESEL GENERATORS 10KVA TO 2500KVA

625kVA Cummins Diesel Generator Set(10kVA-2500kVA)



Product Name: 625kVA Cummins Diesel Generator Set(27.5kVA-1675kVA)

Model No.: PM-X625

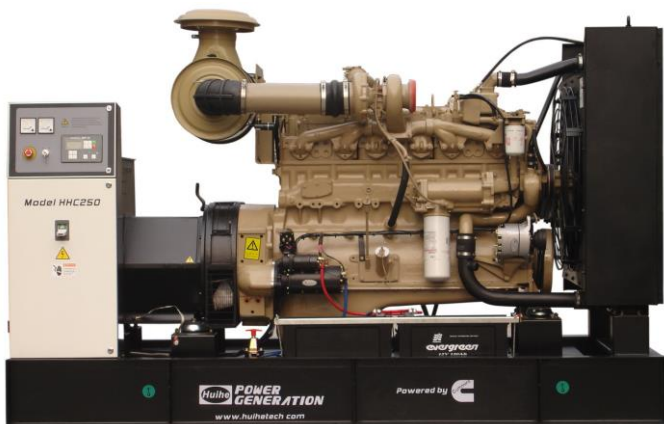
Minimum Order: 1

Product Abstract:

625kVA Cummins Diesel Generator:
Prime Power 450kW/563kVA; Standby Power 500kW/625kVA; Fuel cons.100%(L/H): 106.2; Engine model: KTAA19-G5; Cyl. arrangement: 6L; Intake type: Turbocharged; Bore x Stroke(mm):159x159; Type of governor: Electronic governor; Frequency: 50Hz/60Hz; Rated speed: 1500/1800rpm; Phase/Wires: 3 phase 4 wires; Displacement(L): 19; Dimension(mm): 3560x1345x1965; Weight(kg): 4165; Alternator: Stamford, Marathon, Leroy Somer

DIESEL GENERATORS 10KVA TO 2500KVA

650kVA Cummins Diesel Generator Set(10kVA-2500kVA)



Product Name: 650kVA Cummins Diesel Generator Set(27.5kVA-1675kVA)

Model No.: PM-X650

Minimum Order: 1

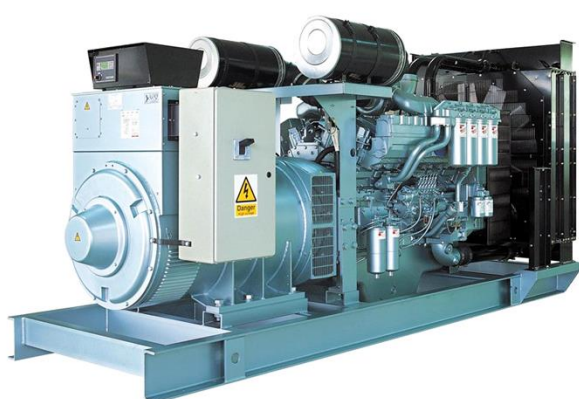
Product Abstract:

650kVA Cummins Diesel Generator:
Prime Power 470kW/588kVA; Standby Power 520kW/650kVA; Fuel cons.100%(L/H): 110.9; Engine model: KTAA19-G6; Cyl. arrangement: 6L; Intake type: Turbocharged; Bore x Stroke(mm):159x159; Type of governor: Electronic governor; Frequency: 50Hz/60Hz; Rated speed: 1500/1800rpm; Phase/Wires: 3 phase 4 wires; Displacement(L): 19; Dimension(mm): 3560x1345x1965; Weight(kg): 4200; Alternator: Stamford, Marathon, Leroy Somer

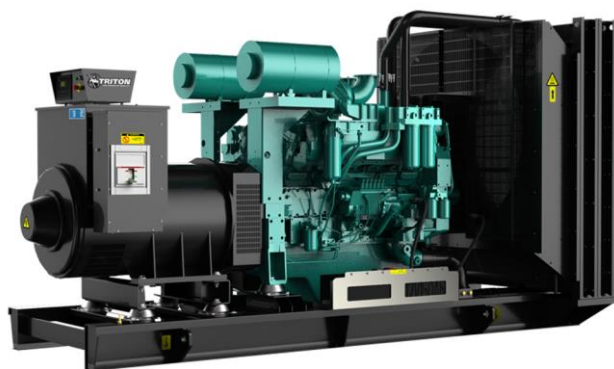


DIESEL GENERATORS 10KVA TO 2500KVA

688kVA Cummins Diesel Generator Set(10kVA-2500kVA)



Product Name: 688kVA Cummins Diesel Generator Set(27.5kVA-1675kVA)
Model No.: PM-X688
Minimum Order: 1



Product Abstract:
688kVA Cummins Diesel Generator:
Prime Power 500kW/625kVA; Standby Power 550kW/688kVA; Fuel cons.100%(L/H): 118; Engine model: KTAA19-G6A; Cyl. arrangement: 6L; Intake type: Turbocharged; Bore x Stroke(mm):159x159; Type of governor: Electronic governor; Frequency: 50Hz/60Hz; Rated speed: 1500/1800rpm; Phase/Wires: 3 phase 4 wires; Displacement(L): 19; Dimension(mm): 3650x1345x1965; Weight(kg): 4305; Alternator: Stamford, Marathon, Leroy Somer

DIESEL GENERATORS 10KVA TO 2500KVA

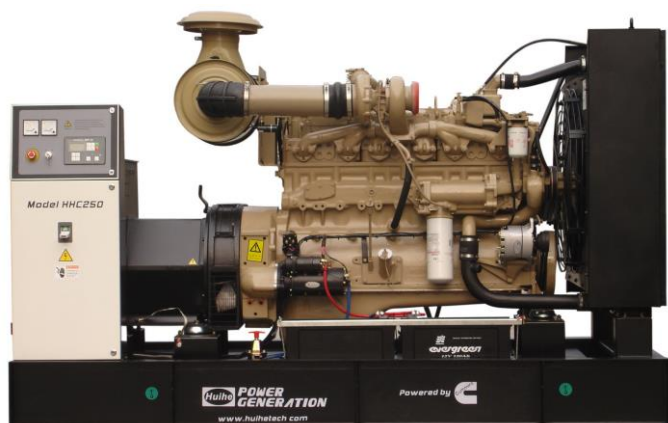
700kVA Cummins Diesel Generator Set(10kVA-2500kVA)



Product Name: 700kVA Cummins Diesel Generator Set(27.5kVA-1675kVA)
Model No.: PM-X700
Minimum Order: 1

Product Abstract:

700kVA Cummins Diesel Generator:
Prime Power 510kW/638kVA; Standby Power 560kW/700kVA; Fuel cons.100%(L/H): 120.4; Engine model: KT38-G; Cyl. arrangement: 12V; Intake type: Turbocharged; Bore x Stroke(mm):159x159; Type of governor: Electronic governor; Frequency: 50Hz/60Hz; Rated speed: 1500/1800rpm; Phase/Wires: 3 phase 4 wires; Displacement(L): 38; Dimension(mm): 3580x1538x1965; Weight(kg): 4650; Alternator: Stamford, Marathon, Leroy Somer



DIESEL GENERATORS 10KVA TO 2500KVA

800kVA Cummins Diesel Generator Set(10kVA-2500kVA)



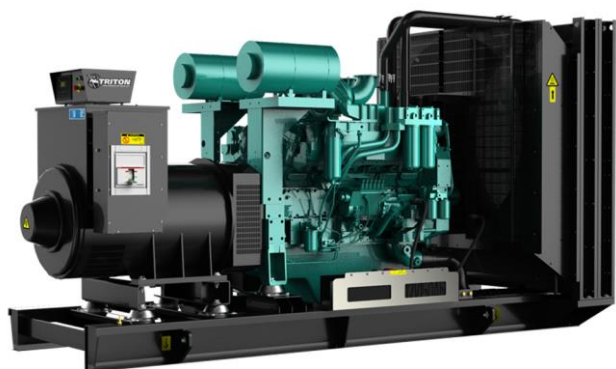
Product Name: 800kVA Cummins Diesel Generator Set(27.5kVA-1675kVA)

Model No.: PM-X800

Minimum Order: 1

Product Abstract:

800kVA Cummins Diesel Generator:
Prime Power 580kW/725kVA; Standby Power 640kW/800kVA; Fuel cons.100%(L/H): 136.9; Engine model: KTA38-GA; Cyl. arrangement: 12V; Intake type: Turbocharged; Bore x Stroke(mm):159x159; Type of governor: Electronic governor; Frequency: 50Hz/60Hz; Rated speed: 1500/1800rpm; Phase/Wires: 3 phase 4 wires; Displacement(L): 38; Dimension(mm): 5560x2000x2300; Weight(kg): 10000; Alternator: Stamford, Marathon, Leroy Somer



DIESEL GENERATORS 10KVA TO 2500KVA

825kVA Cummins Diesel Generator Set(10kVA-2500kVA)



Product Name: 825kVA Cummins Diesel Generator Set(27.5kVA-1675kVA)
Model No.: PM-X825
Minimum Order: 1

Product Abstract:

825kVA Cummins Diesel Generator:
Prime Power 600kW/750kVA; Standby Power 660kW/825kVA; Fuel cons.100%(L/H): 141.6; Engine model: KTA38-G2; Cyl. arrangement: 12V; Intake type: Turbocharged; Bore x Stroke(mm):159x159; Type of governor: Electronic governor; Frequency: 50Hz/60Hz; Rated speed: 1500/1800rpm; Phase/Wires: 3 phase 4 wires; Displacement(L): 38; Dimension(mm): 3650x1638x2040; Weight(kg): 9000; Alternator: Stamford, Marathon, Leroy Somer



DIESEL GENERATORS 10KVA TO 2500KVA

900kVA Cummins Diesel Generator Set(10kVA-2500kVA)



Product Name: 900kVA Cummins Diesel Generator Set(27.5kVA-1675kVA)

Model No.: PM-X900

Minimum Order: 1

Product Abstract:

900kVA Cummins Diesel Generator:
Prime Power 660kW/825kVA; Standby Power 720kW/900kVA; Fuel cons.100%(L/H): 155.8; Engine model: KTA38-G2B; Cyl. arrangement: 12V; Intake type: Turbocharged; Bore x Stroke(mm):159x159; Type of governor: Electronic governor; Frequency: 50Hz/60Hz; Rated speed: 1500/1800rpm; Phase/Wires: 3 phase 4 wires; Displacement(L): 38; Dimension(mm): 3650x1638x2040; Weight(kg): 9000; Alternator: Stamford, Marathon, Leroy Somer



DIESEL GENERATORS 10KVA TO 2500KVA

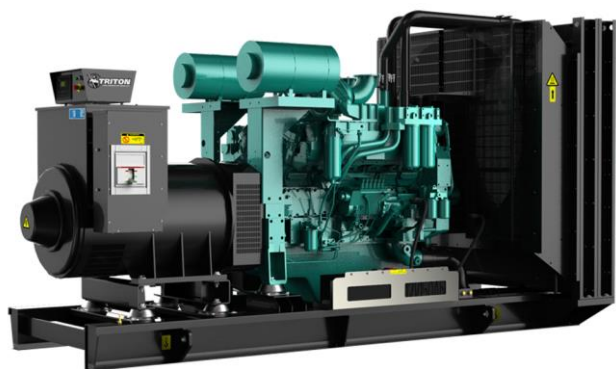
1000kVA Cummins Diesel Generator Set(10kVA-2500kVA)



Product Name: 1000VA Cummins Diesel Generator Set(27.5kVA-1675kVA)
Model No.: BCX1000
Minimum Order: 1

Product Abstract:

1000kVA Cummins Diesel Generator:
Prime Power 728kW/910kVA; Standby Power 800kW/1000kVA; Fuel cons.100%(L/H): 171.9; Engine model: KTA38-G2A; Cyl. arrangement: 12V; Intake type: Turbocharged; Bore x Stroke(mm):159x159; Type of governor: Electronic governor; Frequency: 50Hz/60Hz; Rated speed: 1500/1800rpm; Phase/Wires: 3 phase 4 wires; Displacement(L): 38; Dimension(mm): 3650x1638x2040; Weight(kg): 9500; Alternator: Stamford, Marathon, Leroy Somer



DIESEL GENERATORS 10KVA TO 2500KVA

1100kVA Cummins Diesel Generator Set(10kVA-2500kVA)



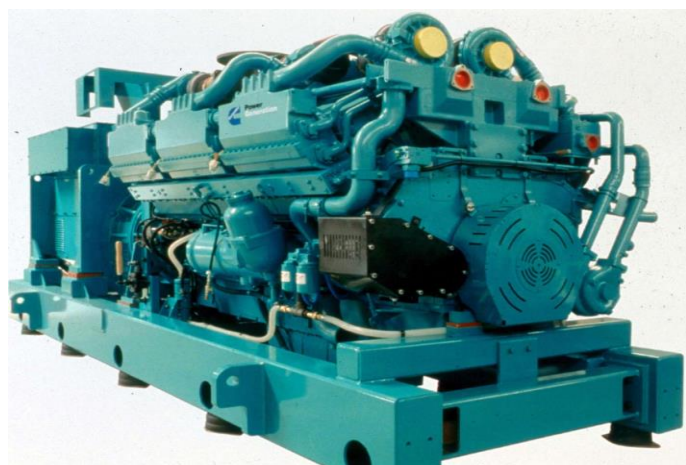
Product Name: 1100kVA Cummins Diesel Generator Set(27.5kVA-1675kVA)

Model No.: PMX1100

Minimum Order: 1

Product Abstract:

1100kVA Cummins Diesel Generator:
Prime Power 800kW/1000kVA; Standby Power 880kW/1100kVA; Fuel cons.100%(L/H): 188.9; Engine model: KTA38-G5; Cyl. arrangement: 12V; Intake type: Turbocharged; Bore x Stroke(mm):159x159; Type of governor: Electronic governor; Frequency: 50Hz/60Hz; Rated speed: 1500/1800rpm; Phase/Wires: 3 phase 4 wires; Displacement(L): 38; Dimension(mm): 4450x1638x2200; Weight(kg): 9650; Alternator: Stamford, Marathon, Leroy Somer



DIESEL GENERATORS 10KVA TO 2500KVA

1250kVA Cummins Diesel Generator Set(10kVA-2500kVA)



Product Name: 1250kVA Cummins Diesel Generator Set(27.5kVA-1675kVA)

Model No.: PM-X1250

Minimum Order: 1

Product Abstract:

1250kVA Cummins Diesel Generator:
Prime Power 910kW/1138kVA; Standby Power 1000kW/1250kVA; Fuel cons.100%(L/H): 214.8; Engine model: KTA38-G9; Cyl. arrangement: 12V; Intake type: Turbocharged; Bore x Stroke(mm):159x159; Type of governor: Electronic governor; Frequency: 50Hz/60Hz; Rated speed: 1500/1800rpm; Phase/Wires: 3 phase 4 wires; Displacement(L): 38; Dimension(mm): 4750x2000x2225; Weight(kg): 8850; Alternator: Stamford, Marathon, Leroy Somer



DIESEL GENERATORS 10KVA TO 2500KVA

1375kVA Cummins Diesel Generator Set(10kVA-2500kVA)



Product Name: 1375kVA Cummins Diesel Generator Set(27.5kVA-1675kVA)

Model No.: PM-X1375

Minimum Order: 1

Product Abstract:

1375kVA Cummins Diesel Generator:
Prime Power 1000kW/1250kVA;
Standby Power 1100kW/1375kVA; Fuel cons.100%(L/H): 224.8; Engine model: KTA38-G9A; Cyl. arrangement: 12V;
Intake type: Turbocharged; Bore x Stroke(mm):159x159; Type of governor: Electronic governor; Frequency: 50Hz/60Hz; Rated speed: 1500/1800rpm; Phase/Wires: 3 phase 4 wires; Displacement(L): 50;
Dimension(mm): 5300x2000x2250;
Weight(kg): 9800; Alternator: Stamford,



DIESEL GENERATORS 10KVA TO 2500KVA

1400kVA Cummins Diesel Generator Set(10kVA-2500kVA)



Product Name: 1400kVA Cummins Diesel Generator Set(27.5kVA-1675kVA)

Model No.: PM-X1400

Minimum Order: 1

Product Abstract:

1400kVA Cummins Diesel Generator:
Prime Power 1020kW/1275kVA;
Standby Power 1120kW/1400kVA; Fuel cons.100%(L/H): 240; Engine model: KTA50-G3; Cyl. arrangement: 16V;
Intake type: Turbocharged; Bore x Stroke(mm):159x159; Type of governor: Electronic governor; Frequency: 50Hz/60Hz; Rated speed: 1500/1800rpm; Phase/Wires: 3 phase 4 wires; Displacement(L): 50;
Dimension(mm): 5300x2000x2250;
Weight(kg): 9800; Alternator: Stamford, Marathon, Leroy Somer



DIESEL GENERATORS 10KVA TO 2500KVA

1500kVA Cummins Diesel Generator Set(10kVA-2500kVA)



Product Name: 1500kVA Cummins Diesel Generator Set(27.5kVA-1675kVA)

Model No.: BCX1500

Minimum Order: 1

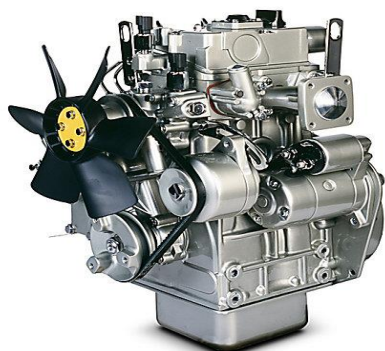
Product Abstract:

1500kVA Cummins Diesel Generator:
Prime Power 1100kW/1375kVA;
Standby Power 1200kW/1500kVA; Fuel cons.100%(L/H): 283.3; Engine model: KTA50-G8; Cyl. arrangement: 16V;
Intake type: Turbocharged; Bore x Stroke(mm):159x159; Type of governor: Electronic governor; Frequency: 50Hz/60Hz; Rated speed: 1500/1800rpm; Phase/Wires: 3 phase 4 wires; Displacement(L): 50;
Dimension(mm): 5300x2000x2250; Weight(kg): 9800; Alternator: Stamford, Marathon, Leroy Somer



DIESEL ENGINES (5KVM TO 601 KVM)

402D-05G Perkins Diesel Engine Set(5kVM-601kVM)



Engine Dimensions

Length	407.0 mm
Width	371.0 mm
Height	523.0 mm
Dry weight	73.0 kg

Emission Standards

Emissions	EU Stage IIIA/U.S. EPA Tier 3
-----------	-------------------------------

Power Rating

Mechanical output**	5-10 kWm
Electrical output**	5-10 kVA (4-8 kWe)
Rated speed	1800/3000/3600 rpm

402D-05G ELECTRO UNIT

0.51 litre

4.8-9 kVA

The 402D-05G is a naturally aspirated, indirect injection engine that meets EU Stage IIIA/U.S. EPA Tier 4 interim emissions standards.

GENERAL

Bore	67.0 mm
Stroke	72.0 mm
Displacement	0.51 litres
Aspiration	Naturally aspirated
Rotation (from flywheel end)	Anti-clockwise
Number of cylinders	2 inline
Cycle 4 stroke	4 stroke
Compression ratio	23.5:1
Combustion system	Indirect injection
Cooling system	Liquid
Total coolant capacity	2.5 litres
Total lubricating capacity	2.0 litres

DIESEL ENGINES (5KVM TO 601 KVM)

403A-11G Perkins Diesel Engine Set(5kVM-601kVM)



Engine Dimensions

Length	775.0 mm
Width	438.0 mm
Height	702.0 mm
Dry weight	129.0 kg

Power Rating

Mechanical output	8-9 kWm
Electrical output	9-10 kVA (7-8 kWe)
Rated Speed	1500 rpm

Emission Standards

Emissions	This engine does not comply to Harmonised
-----------	---

403A-11G ELECTROPAK

1.1 litre

9-12 kVA

The 403A-11G ElectropaK is a powerful but quiet 1.1 litre naturally aspirated 3 cylinder unit that is designed for use in unregulated territories.

GENERAL

Bore	77.0 mm
Stroke	81.0 mm
Displacement	1.1 litres
Aspiration	Naturally Aspirated
Compression Ratio	23:1
Combustion System	Indirect Injection
Rotation (from flywheel end)	Anti-clockwise
Number of cylinders	3 inline
Cycle	4 stroke
Cooling system	Liquid
Total coolant capacity	5.2 litres

DIESEL ENGINES (5KVM TO 601 KVM)

403A-15G Perkins Diesel Engine Set(5kVM-601kVM)



403A-15G ELECTROPAK-

1.5 litre

13-20 kVA

The 403A-15G ElectropaK is a powerful but quiet 1.5 litre naturally aspirated 3 cylinder package that is designed for use in unregulated territories.

GENERAL

Bore	84.0 mm
Stroke	90.0 mm
Displacement	1.5 litres
Aspiration	Naturally aspirated
Compression Ratio	22.5:1
Combustion System	Indirect injection
Rotation (from flywheel end)	Anti-clockwise
Number of cylinders	3 inline
Cycle	4 stroke
Cooling system	Liquid
Total coolant capacity	6.0 litres

Engine Dimensions

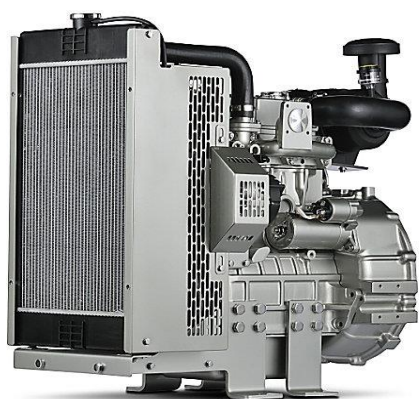
Length	820.0 mm
Width	469.0 mm
Height	793.0 mm
Dry weight	197.0 kg

Power Rating

Mechanical output	12-17 kWm
Electrical output	13-20 kVA (10-16 kWe)
Rated Speed	1500/1800 rpm

DIESEL ENGINES (5KVM TO 601 KVM)

403D-07G Perkins Diesel Engine Set(5kVM-601kVM)



Engine Dimensions

Length	509.0 mm
Width	376.0 mm
Height	528.0 mm
Dry weight	87.0 kg

Power Rating

Mechanical output**	5-14 kWm
Electrical output**	5-15 kVA (5-12 kWe)
Rated speed	1500/1800/3000/3600 rpm

403D-07G ELECTRO UNIT

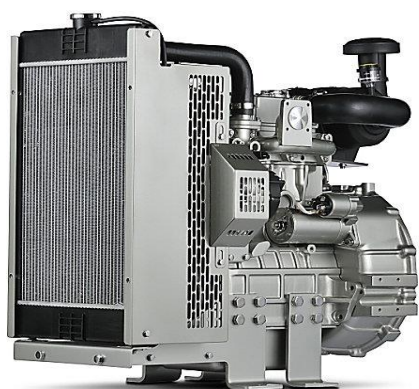
0.7 litre
5.8-13.5 kVA

GENERAL

Bore	67.0 mm
Stroke	72.0 mm
Displacement	0.76 litres
Aspiration	Naturally aspirated
Rotation (from flywheel end)	Anti-clockwise
Number of cylinders	3 inline
Cycle	4 stroke
Compression ratio	23.5:1
Combustion system	Indirect injection
Cooling system	Liquid
Total coolant capacity	2.6 litres
Total lubricating capacity	3.0 litres

DIESEL ENGINES (5KVM TO 601 KVM)

403D-11G Perkins Diesel Engine Set(5kVM-601kVM)



403D-11G ELECTROPAK

1.1 litre
9-20 Kva

GENERAL

Bore	77.0 mm
Stroke	81.0 mm
Displacement	1.1 litres
Aspiration	Naturally aspirated
Rotation (from flywheel end)	Anti-clockwise
Number of cylinders	3 inline
Cycle	4 stroke
Compression ratio	23:1
Combustion system	Indirect injection
Cooling system	Liquid
Total coolant capacity	5.2 litres
Total lubricating capacity	4.9 litres

Engine Dimensions

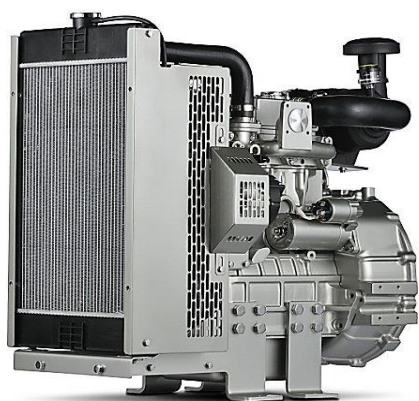
Length	776.0 mm
Width	449.0 mm
Height	700.0 mm
Dry weight	129.2 kg

Power Rating

Mechanical output**	8-18 kWm
Electrical output**	9-12 kVA (7-10 kWe)
Rated speed	1500/1800/3000 rpm

DIESEL ENGINES (5KVM TO 601 KVM)

403D-15G Perkins Diesel Engine Set(5kVM-601kVM)



Engine Dimensions

Length	820.0 mm
Width	497.0 mm
Height	791.0 mm
Dry weight	197.0 kg

Power Rating

Mechanical output**	12-16 kWm
Electrical output**	13-17 kVA (10-14 kWe)
Rated speed	1500/1800/3000 rpm

403D-15G ELECTROPAK

1.5 litre

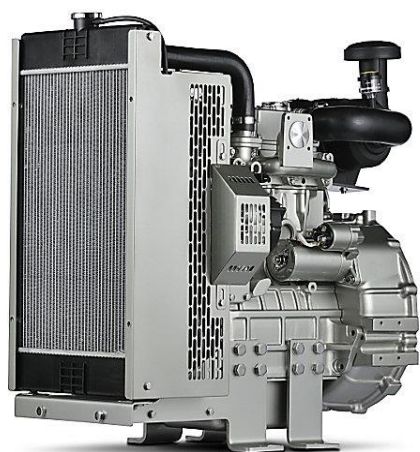
13-24 kVA

GENERAL

Bore	84.0 mm
Stroke	90.0 mm
Displacement	1.5 litres
Aspiration	Naturally aspirated
Rotation (from flywheel end)	Anti-clockwise
Number of cylinders	3 inline
Cycle	4 stroke
Compression ratio	22.5:1
Combustion system	Indirect injection
Cooling system	Liquid
Total coolant capacity	6.0 litres

DIESEL ENGINES (5KVM TO 601 KVM)

403F-07G Perkins Diesel Engine Set(5kVM-601kVM)



403F-07G ELECTRO UNIT

0.7 litre

5.8 kVA

GENERAL

Bore	67.0 mm
Stroke	72.0 mm
Displacement	0.76 litres
Aspiration	Naturally aspirated
Rotation (from flywheel end)	Anti-clockwise
Number of cylinders	3 inline
Cycle	4 stroke
Compression ratio	23.5:1
Combustion system	Indirect injection
Cooling system	Liquid
Total coolant capacity	2.6 litres
Total lubricating capacity	3.1 litres

Engine Dimensions

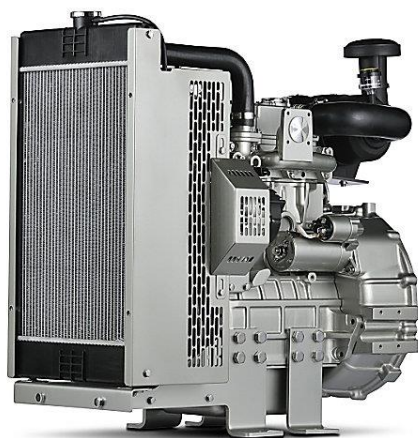
Length	509.0 mm
Width	376.0 mm
Height	528.0 mm
Dry weight	87.0 kg

Power Rating

Mechanical output	5 kWm
Electrical output	6 kVA (5 kWe)
Rated speed	1800 rpm

DIESEL ENGINES (5KVM TO 601 KVM)

403F-11G Perkins Diesel Engine Set(5kVM-601kVM)



Engine Dimensions

Length	776.0 mm
Width	449.0 mm
Height	700.0 mm
Dry weight	129.2 kg

Power Rating

Mechanical output	10-11 kWm
Electrical output	11-12 kVA (9-10 kWe)
Rated speed	1800 rpm

403F-11G ELECTROPAK

1.1 litre

10 kVA

GENERAL

Bore	77.0 mm
Stroke	81.0 mm
Displacement	1.1 litres
Aspiration	Naturally aspirated
Rotation (from flywheel end)	Anti-clockwise
Number of cylinders	3 inline
Cycle	4 stroke
Compression ratio	23:1
Combustion system	Indirect injection
Cooling system	Liquid
Total coolant capacity	5.2 litres
Total lubricating capacity	4.9 litres

DIESEL ENGINES (5KVM TO 601 KVM)

403F-15G Perkins Diesel Engine Set(5kVM-601kVM)



403F-15G ELECTROPAK

1.5 litre

15 Kva

GENERAL

Bore	84.0 mm
Stroke	90.0 mm
Displacement	1.5 litres
Aspiration	Naturally aspirated
Rotation (from flywheel end)	Anti-clockwise
Number of cylinders	3 inline
Cycle	4 stroke
Compression ratio	22.5:1
Combustion system	Indirect injection
Cooling system	Liquid
Total coolant capacity	6.0 litres
Total lubricating capacity	6.0 litres

Engine Dimensions

Length	820.0 mm
Width	497.0 mm
Height	791.0 mm
Dry Weight	197.0 kg

Power Rating

Mechanical output	14 kWm
Electrical output	15 kVA (12 kW _e)
Rated speed	1800 rpm

DIESEL ENGINES (5KVM TO 601 KVM)

404A-22G Perkins Diesel Engine Set(5kVM-601kVM)



404A-22G ELECTROPAK

2.2 litre
20-22 Kva

GENERAL

Bore	84.0 mm
Stroke	100.0 mm
Displacement	2.2 litres
Aspiration	Naturally aspirated
Compression Ratio	23.3:1
Combustion System	Indirect injection
Rotation (from flywheel end)	Anti-clockwise
Number of cylinders	4 inline
Cycle	4 stroke
Cooling system	Liquid
Total coolant capacity	7.0 litres
Total lubricating capacity	10.6 Litres

Engine Dimensions

Length	946.0 mm
Width	497.0 mm
Height	841.0 mm
Dry weight	242.0 kg

Power Rating

Mechanical output	18-20 kWm
Electrical output	20-22 kVA (16-18 kWe)
Rated Speed	1500 rpm

DIESEL ENGINES (5KVM TO 601 KVM)

404D-22TG Perkins Diesel Engine Set(5kVM-601kVM)



404D-22TG ELECTROPAK

2.2 litre
27-36 Kva

GENERAL

Bore	84.0 mm
Stroke	100.0 mm
Displacement	2.2 litres
Aspiration	Turbocharged
Rotation (from flywheel end)	Anti-clockwise
Number of cylinders	4 inline
Cycle	4 stroke
Compression ratio	23.3:1
Combustion system	Indirect injection
Cooling system	Liquid
Total coolant capacity	9.3 litres
Total lubricating capacity	10.6 litres

Engine Dimensions

Length	973.0 mm
Width	590.0 mm
Height	973.0 mm
Dry weight	242.0 kg

Power Rating

Mechanical output**	25-33 kWm
Electrical output**	20-36 kVA (22-29 kWe)
Rated speed	1500/1800 rpm

DIESEL ENGINES (5KVM TO 601 KVM)

404D-22TAG Perkins Diesel Engine Set(5kVM-601kVM)



404D-22TAG ELECTROPAK

2.2 litre

37-40 kVA

GENERAL

Bore	84.0 mm
Stroke	100.0 mm
Displacement	2.2 litres
Aspiration	Turbocharged aftercooled
Rotation (from flywheel end)	Anti-clockwise
Number of cylinders	4 inline
Cycle	4 stroke
Compression ratio	23.3:1
Combustion system	Indirect injection
Cooling system	Liquid
Total coolant capacity	9.3 litres
Total lubricating	10.6 litres

Engine Dimensions

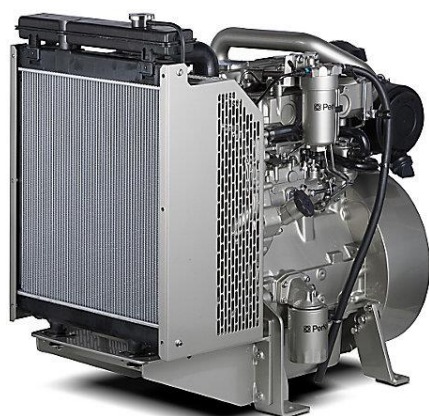
Length	1050.0 mm
Width	709.0 mm
Height	997.5 mm
Dry weight	306.0 kg

Power Rating

Mechanical output**	32-36 kWm
Electrical output**	37-40 kVA (29-32 kWe)
Rated speed	1800 rpm

DIESEL ENGINES (5KVM TO 601 KVM)

1103A-33G Perkins Diesel Engine Set(5kVM-601kVM)



1103A-33G ELECTROPAK ENGINE

3.3 litre

30-38 kVA

GENERAL

Bore	105.0 mm
Stroke	127.0 mm
Displacement	3.3 litres
Aspiration	Naturally aspirated
Rotation (from flywheel end)	Anti-clockwise
Number of cylinders	3 vertical inline
Cycle	4 stroke
Compression ratio	19.25:1
Combustion system	Direct injection
Cooling system	Liquid
Total coolant capacity	10.2 litres
Total lubricating capacity	8.3 litres

Engine Dimensions

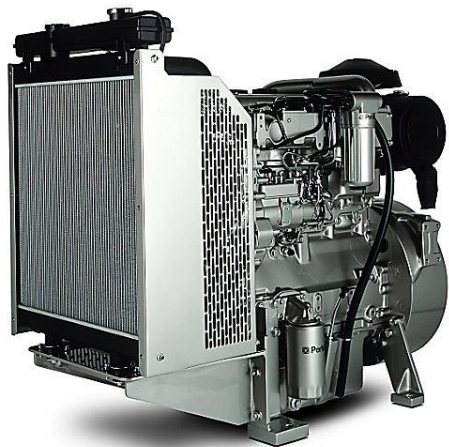
Length	1000.0 mm
Width	629.0 mm
Height	951.0 mm
Dry weight	412.0 kg

Power Rating

Mechanical output	28-35 kWm
Electrical output	30-38 kVA (24-31 kW _e)
Rated speed	1500/1800 rpm

DIESEL ENGINES (5KVM TO 601 KVM)

1103A-33TG Perkins Diesel Engine Set(5kVM-601kVM)



1103A-33TG ELECTROPAK ENGINE
3.3 litre
45-75 kVA

GENERAL

Bore	105.0 mm
Stroke	127.0 mm
Displacement	3.3 litres
Aspiration	Turbocharged
Rotation (from flywheel end)	Anti-clockwise
Number of cylinders	3 vertical inline
Cycle	4 stroke
Compression ratio	17.25:1
Combustion system	Direct injection
Cooling system	Liquid
Total coolant capacity	10.2 litres
Total lubricating capacity	8.3 litres

Engine Dimensions

Length	1049.0 mm
Width	634.0 mm
Height	951.0 mm
Dry weight	420.0 kg

Power Rating

Mechanical output	42-68 kWm
Electrical output	45-75 kVA (36-60 kWe)
Rated speed	1500/1800 rpm

DIESEL ENGINES (5KVM TO 601 KVM)

1103C-33TG Perkins Diesel Engine Set(5kVM-601kVM)



1103C-33TG ELECTROPAK ENGINE

3.3 litre

45-59 kVA

GENERAL

Bore	105.0 mm
Stroke	127.0 mm
Displacement	3.3 litres
Aspiration	Turbocharged
Rotation (from flywheel end)	Anti-clockwise
Number of cylinders	3 inline
Cycle	4 stroke
Compression ratio	18.23:1
Combustion system	Direct injection
Cooling system	Liquid
Total coolant capacity	10.1 litres
Total lubricating capacity	8.3 litres

Engine Dimensions

Length	1045.0 mm
Width	643.0 mm
Height	951.0 mm
Dry weight	412.0 kg

Power Rating

Length	1045.0 mm
Width	643.0 mm
Height	951.0 mm

DIESEL ENGINES (5KVM TO 601 KVM)

1103D-33G Perkins Diesel Engine Set(5kVM-601kVM)



1103D-33G ELECTROPAK ENGINE
3.3 litre
32-35 kVA

GENERAL

Bore	105.0 mm
Stroke	127.0 mm
Displacement	3.3 litres
Aspiration	Naturally aspirated
Rotation (from flywheel end)	Anti-clockwise
Number of cylinders	3 vertical inline
Cycle	4 stroke
Compression ratio	19.25:1
Combustion system	Direct injection
Cooling system	Liquid
Total coolant capacity	10.2 litres
Total lubricating capacity	8.3 litres

Engine Dimensions

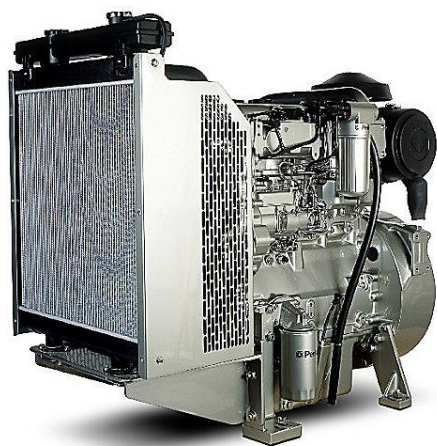
Length	1000.0 mm
Width	631.0 mm
Height	951.0 mm
Dry weight	412.0 kg

Power Rating

Mechanical output	29-37 kWm
Electrical output	32-40 kVA (25-32 kWe)
Rated speed	1500/1800 rpm

DIESEL ENGINES (5KVM TO 601 KVM)

404D-22TG Perkins Diesel Engine Set(5kVM-601kVM)



1104A-44TG ELECTROPAK ENGINE
4.4 litre
65-100 kVA

GENERAL

Bore	105.0 mm
Stroke	127.0 mm
Displacement	4.4 litres
Aspiration	Turbocharged
Rotation (from flywheel end)	Anti-clockwise
Number of cylinders	4 vertical inline
Cycle	4 stroke
Compression ratio	17.25:1
Combustion system	Direct injection
Cooling system	Liquid
Total coolant capacity	13.0 litres
Total lubricating capacity	8.4 litres

Engine Dimensions

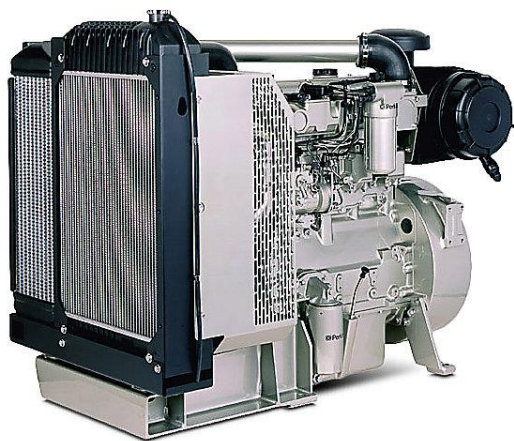
Length	1241.0 mm
Width	629.0 mm
Height	951.0 mm
Dry weight	556.0 kg

Power Rating

Mechanical output	58-90 kWm
Electrical output	65-100 kVA (52-80 kWe)
Rated speed	1500/1800 rpm

DIESEL ENGINES (5KVM TO 601 KVM)

1104C-44TAG Perkins Diesel Engine Set(5kVM-601kVM)



Engine Dimensions

Length	1259.0 mm
Width	721.0 mm
Height	966.0 mm
Maximum dry weight	524.0 kg

Power Rating

Mechanical output	72-112 kWm
Electrical output	80-126 kVA (64-101 kWe)
Rated speed	1500/1800 rpm

1104C-44TAG ELECTROPAK ENGINE

4.4 litre

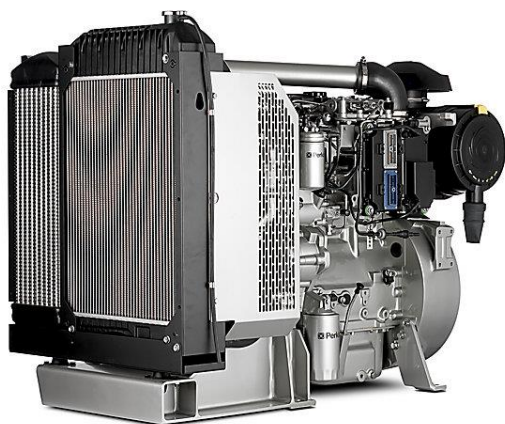
80-127 kVA

GENERAL

Bore	105.0 mm
Stroke	127.0 mm
Displacement	4.4 litres
Aspiration	Turbocharged air-to-air charge cooled
Rotation (from flywheel end)	Anti-clockwise
Number of cylinders	4 inline
Cycle	4 stroke
Compression ratio	18.2:1
Combustion system	Direct injection
Cooling system	Liquid
Total coolant capacity	12.6 litres
Total lubricating capacity	8.4 litres

DIESEL ENGINES (5KVM TO 601 KVM)

1104D-E44TAG Perkins Diesel Engine Set(5kVM-601kVM)



1104D-E44TAG ELECTROPAK ENGINE 4.4 litre 80-125 kVA GENERAL

Bore	105.0 mm
Stroke	127.0 mm
Displacement	4.4 litres
Aspiration	Turbocharged air-to-air charge cooled
Rotation (from flywheel end)	Anti-clockwise
Number of cylinders	4 inline
Cycle	4 stroke
Compression ratio	16.2:1
Combustion system	Direct injection
Cooling system	Liquid
Total coolant capacity	17.0 litres
Total lubricating	8.4 litres

Engine Dimensions

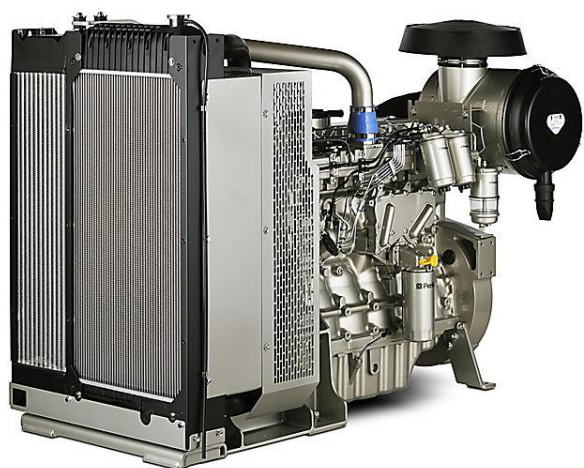
Length	1358.0 mm
Width	749.0 mm
Height	1086.0 mm
Dry weight	587.0 kg

Power Rating

Mechanical output**	73-111 kWm
Electrical output**	81-125 kVA (64-100 kWe)
Rated speed	1500/1800 rpm

DIESEL ENGINES (5KVM TO 601 KVM)

1106A-70TG Perkins Diesel Engine Set(5kVM-601kVM)



1106A-70TG ELECTROPAK ENGINE

7 litre

135-169 kVA

GENERAL

Bore	105.0 mm
Stroke	135.0 mm
Displacement	7.0 litres
Aspiration	Turbocharged
Rotation (from flywheel end)	Anti-clockwise
Number of cylinders	6 vertical inline
Cycle	4 stroke
Compression ratio	18.2:1
Combustion system	Direct injection
Cooling system	Liquid
Total coolant capacity	21.0 litres
Total lubricating capacity	18.0 litres

Engine Dimensions

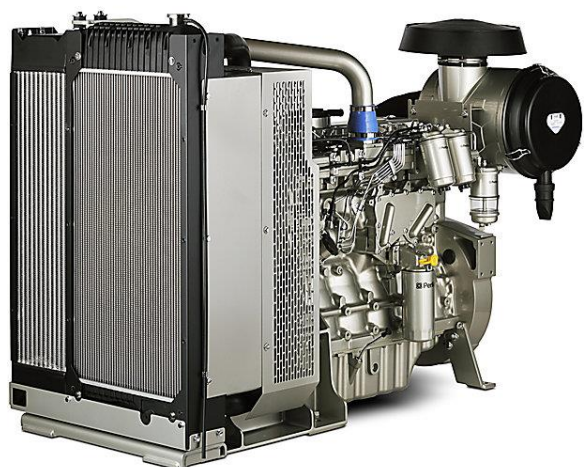
Length	1646.0 mm
Width	760.0 mm
Height	1092.0 mm
Dry weight	739.0 kg

Power Rating

Mechanical output	118-145 kWm
Electrical output	135-169 kVA (108-135 kWe)
Rated speed	1500/1800 rpm

DIESEL ENGINES (5KVM TO 601 KVM)

1106A-70TAG Perkins Diesel Engine Set(5kVM-601kVM)



1106A-70TAG ELECTROPAK

7 litre

150-220 kVA

GENERAL

Bore	105.0 mm
Stroke	135.0 mm
Displacement	7.01 litres
Aspiration	Turbocharged aftercooled
Rotation (from flywheel end)	Anti-clockwise
Number of cylinders	6 verticle inline
Cycle	4 stroke
Compression ratio	18.2:01
Combustion system	Direct injection
Cooling system	Liquid
Total coolant capacity	21.0 litres
Total lubricating capacity	16.5 litres

Engine Dimensions

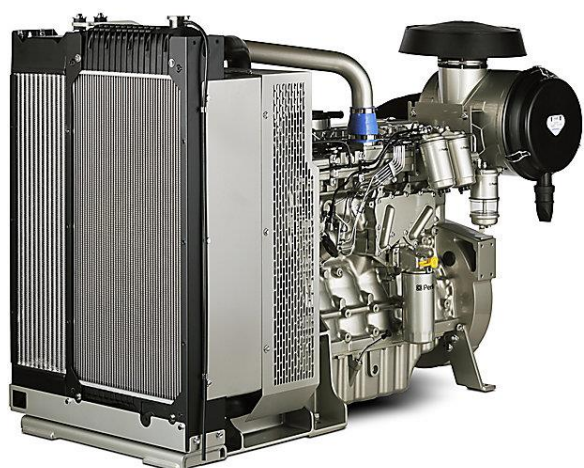
Length	1763.0 mm
Width	756.0 mm
Height	1142.0 mm
Dry weight	733.0 kg

Power Rating

Mechanical output	131-192 kWm
Electrical output	150-220 kVA (120-176 kWe)
Rated speed	1500/1800 rpm

DIESEL ENGINES (5KVM TO 601 KVM)

1106D-E70TAG Perkins Diesel Engine Set(5kVM-601kVM)



1106D-E70TAG ELECTROPAK ENGINE
7 litre
142-250 kVA

GENERAL

Bore	105.0 mm
Stroke	135.0 mm
Displacement	7.0 litres
Aspiration	Turbocharged aftercooled
Rotation (from flywheel end)	Anti-clockwise
Number of cylinders	6 vertical inline
Cycle	4 stroke
Compression ratio	16.8:1
Combustion system	Direct injection
Cooling system	Liquid
Total coolant capacity	21.0 litres
Total lubricating	17.5 litres

Engine Dimensions

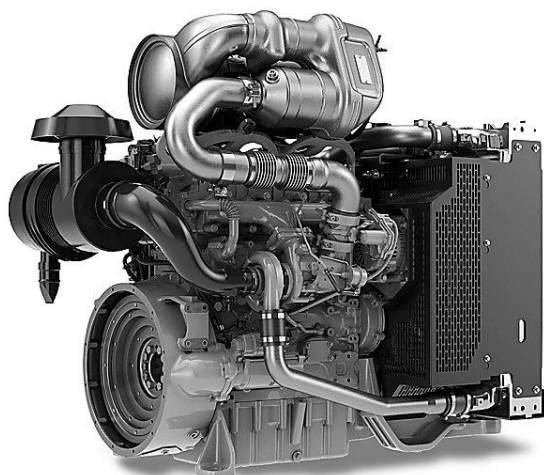
Length	1763.0 mm
Width	788.0 mm
Height	1142.0 mm
Dry weight	788.0 kg

Power Rating

Mechanical output**	129-218 kWm
Electrical output**	142-250 kVA (114-200 kW _e)
Rated speed	1500-1800 rpm

DIESEL ENGINES (5KVM TO 601 KVM)

1204F-E44TTAG Perkins Diesel Engine Set(5kVM-601kVM)



1204F-E44TTAG Diesel Engine

4.4 litre

113.6-125 kVA

GENERAL

Bore	105.0 mm
Stroke	135.0 mm
Displacement	7.01 litres
Aspiration	Series turbocharged aftercooled
Rotation (from flywheel end)	Anti-clockwise
Number of cylinders	6 verticle inline
Cycle	4 stroke
Compression ratio	16.5:1
Combustion system	Direct injection
Cooling system	Liquid
Total coolant capacity	15.2 litres
Total lubricating	16.0 litres

Engine Dimensions

Length	1769.0 mm
Width	916.0 mm
Height	1461.0 mm
Dry weight	1087.0 kg

Power Rating

Length	799.0 mm
Width	770.0 mm
Height	515.0 mm

DIESEL ENGINES (5KVM TO 601 KVM)

1206F-E70TTAG Perkins Diesel Engine Set(5kVM-601kVM)



1206F-E70TTAG Diesel Engine
7 litre
169-250 kVA
GENERAL

Bore	105.0 mm
Stroke	135.0 mm
Displacement	7.01 litres
Aspiration	Series turbocharged aftercooled
Rotation (from flywheel end)	Anti-clockwise
Number of cylinders	6 verticle inline
Cycle	4 stroke
Compression ratio	16.5:1
Combustion system	Direct injection
Cooling system	Liquid
Total coolant capacity	15.2 litres
Total lubricating	16.0 litres

Engine Dimensions

Length	1769.0 mm
Width	916.0 mm
Height	1461.0 mm
Dry weight	1087.0 kg

Power Rating

Mechanical output	151-223 kWm
Electrical output	169-250 kVA (135-200 kWe)
Rated speed	1800 rpm

DIESEL ENGINES (5KVM TO 601 KVM)

1506A-E88G Perkins Diesel Engine Set(5kVM-601kVM)



Engine Dimensions

Length (including air cleaner)	1941.0 mm
Width	1013.0 mm
Height	1366.0 mm
Dry weight	1113.0 kg

Power Rating

Mechanical output	178-333 kWm
Electrical output	200-330 kVA (160-300 kWe)
Rated speed	1500/1800 rpm

1506A-E88TAG ElectropaK

8.8 litre

202-299 kWm standby net power @ 1500 rpm

242-345 kWm standby net power @ 1800 rpm

GENERAL

Number of cylinders	6 vertical inline
Bore	112.0 mm
Stroke	149.0 mm
Displacement	8.8 litres
Aspiration	Turbocharged aftercooled
Cycle	4 stroke
Compression ratio	16.1:1
Combustion system	Direct injection
Rotation (from flywheel end)	Anti-clockwise
Cooling system	Liquid
Total coolant capacity	29.6 litres
Total lubricating capacity	41.0 litres

Products

USED EQUIPMENTS ARE AVAILABLE

Perkins Generators in Pakistan are being provided by COXPOWERMAX ENGINEERING in the major cities like Karachi, Lahore, and Islamabad etc. We founded the company with the aim of providing complete power backup solution at an affordable price. The company's main line of business is manufacturing and Sale of Automatic Power Generators. Coxpowermax Engineering & Services symbolizes a company dedicated to the provision of innovative Engineering skills, each year witness's further application of the latest technology to its products innovation, reliability and total flexibility. We provide diesel generators and rental generators ranging from 13KVA to 2500KVA with a strong reputation as a supplier of reliable engines, leadership in emissions solutions, and years of experience in generator technologies.

We deals in used equipments,

USED EQUIPMENT

- ◆ Boilers
- ◆ Generators
- ◆ Steam turbines
- ◆ Electric motor

BOILERS

COXPOWERMAX Engineering deal in all series of boilers
Such as

- 101 Series (5 to 22 H.P.) U-druteam boiler m s
- **102 Series 1.5-3 H.P.**
- **103 Series H-Drum 7-25 H.P.**
- **104 Series 30-50 H.P.**
- **105 Series 70-150 H.P.**





PRODUCT

Rental Products

All our customer have special needs, and CoxPowerMax Engineering is always there to take care of your all power needs. We make amazing rental packages to meet your specific needs based on your application, whether you need 24 hours a day package, just a few hours a day or pure standby. We have just the package to suit your needs. All types of generators are available for rental purpose from **10KVA to 700KVA** on reasonable Rates

Rental services are available on your suitable terms.

Short term rental power requirements

If you require continuous power supply for **one week, one month or longer**. We can look after of your needs. Our package are available on consumable rates, product support and operators. You have absolutely nothing to worry about as Powermax will take care of all your power needs.

If your requirement does not fulfil with the generators in Rental Store. Please contact Ajaz Khan ([CELL# 03212010005](tel:03212010005), [Email= ajaz.ahmed@coxpowermax.com](mailto:ajaz.ahmed@coxpowermax.com))

Long term rental power requirements

If you want do rental contract with Power Max for **ONE YEAR OR MORE** or If your requirement is financing for your Power or Construction Equipment. Powermax can assist with arranging Lease financing. If you want Powermax to operate and maintain the equipment as well then a Rent to Own proposal would suit you ideally. Please contact us with your exact requirements so that a tailor made proposal to suit your requirements can be made.



OUR PROUD CLIENTS



SERVICES

OUR PROUD CLIENTS



Saffron





DIESEL ENGINES (5KVM TO 601 KVM)

SERVICES

Our Core Services in Pakistan

Cox Power Max Company being one of the most influential source of power services in Pakistan, has acquired a huge network of power generators. This factor helps elevate our company's status as one of Pakistan's leading power supplying partner.

We provide some of the following services in the power supplying industry of Pakistan:

- The quality of our products and services are of the highest kind
- Power partnering is done through various channels
- This is where you come first
- One of Pakistan's leading power providers
- 24-hour customer service center, which is operation 7 days a week
- More than 23 years of experience in the field
- Pakistani owned company
- Have head offices in all major cities such as, Karachi, Lahore and Islamabad



SERVICES

Rental Service

Cox Engineering being an extremely reliable power provider, have a plan in place to ensure the fact that power is there when you need it. Finding a **generator for rent** can prove to be a difficult task. However, it can be made easier with the help of **Cox Power Max Company**. Furthermore, it is beneficent in a variety of circumstances to rent a generator, rather than buying it.

It is essential to check the generator provider's credibility before renting a generator from them. The credibility check should be done keeping in mind the service and equipment perspective, as both these things are extremely vital for any power provider.

Spare Parts Service

Cox Power Max Company never ceases to innovate. The level of innovation is such that we do not limit or restrict ourselves to one aspect of an industry, we constantly aim to expand our horizons. In this case, our scope is not limited to the supply of generators rather we take part in **generator repairing, generator maintenance**, and also availability of **generator spare parts**. We provide our clients with many electrical parts and system up gradation components. These components include Automatic Transfer Switch, Load Sharing and Synchronizing Panels. We also make some gradation components on the request of a customer such as tailor made Control Panels. We supply all kinds of spare parts, be it a minor item such as a spark plug or be it an overhauling component such as Piston.

Our current situation is such that we do not hold inventory for a long period of time. We hold a reasonable amount of stock, all of which are fast-moving spare parts. We have made exclusive arrangements with a number of supply chain partners, hence we can arrange a wide range of specialized parts within a short period of time. Supplying anything and everything for the sake of convenience for our customers is our main goal.



CoxPower max

DIESEL GENERATORS(5KVM TO 601 KVM)

CONTACT US

OWNER OF THE COMPANY

AJAZ AHMED KHAN

ADDRESS

KARACHI OFFICE

Bab-e-Arif Apartment,
Shop no.A-59, North Karachi.

CONTACT

03212010005

ISLAMABAD OFFICE

Street 55A, Shop No.05 F6/4,
Islamabad

Phone: 0321-2374086

U.A.E OFFICE

Behind Caterpillar, Industrial Area
No.3 Sharjah U.A.E

Phone: 00971528105369



EMAIL

- ajaz.ahmed@coxpowersmax.com
- Coxpower786@gmail.com

THANK YOU !!!